

**Product Name: Phospho-c-Met (Tyr1349) Rabbit  
Monoclonal Antibody  
Catalog #: AMRe02861**

---

## Summary

<b>Production Name</b>	Phospho-c-Met (Tyr1349) Rabbit Monoclonal Antibody
<b>Description</b>	Recombinant Rabbit Monoclonal antibody
<b>Host</b>	Rabbit
<b>Application</b>	WB,IP
<b>Reactivity</b>	Human

## Performance

<b>Conjugation</b>	Unconjugated
<b>Modification</b>	Phosphorylated
<b>Isotype</b>	IgG
<b>Clonality</b>	Monoclonal Antibody
<b>Form</b>	Liquid
<b>Storage</b>	Store at 4°C short term. Aliquot and store at -20°C long term. Avoid freeze/thaw cycles.
<b>Buffer</b>	50mM Tris-Glycine(pH 7.4), 0.15M NaCl, 40% Glycerol, 0.01% Sodium azide and 0.05% BSA
<b>Purification</b>	Affinity Purified

## Immunogen

<b>Gene Name</b>	MET
<b>Alternative Names</b>	MET; Hepatocyte growth factor receptor; HGF receptor; HGF/SF receptor; Proto-oncogene c-Met; Scatter factor receptor; SF receptor; Tyrosine-protein kinase Met
<b>Gene ID</b>	4233
<b>SwissProt ID</b>	P08581

## Application

<b>Dilution Ratio</b>	WB: 1/500-1/1000 IP: 1/20
<b>Molecular Weight</b>	Calculated MW: 156 kDa; Observed MW: 170,140 kDa

**Product Name: Phospho-c-Met (Tyr1349) Rabbit  
Monoclonal Antibody  
Catalog #: AMRe02861**

---

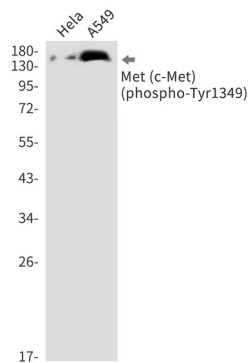
## Background

The proto-oncogene MET product is the hepatocyte growth factor receptor and encodes tyrosine-kinase activity. The primary single chain precursor protein is post-translationally cleaved to produce the alpha and beta subunits, which are disulfide linked to form the mature receptor.

## Research Area

Signal Transduction

## Image Data



Western blot analysis of Phospho-Met (c-Met) (Tyr1349) in HeLa, A549 lysates using Phospho-c-Met (Tyr1349) antibody.

## Note

For research use only.