

**Product Name: Phospho-MCM2 (Ser27) Rabbit
Monoclonal Antibody
Catalog #: AMRe02859**

Summary

| | |
|------------------------|-------------------------------------------------|
| Production Name | Phospho-MCM2 (Ser27) Rabbit Monoclonal Antibody |
| Description | Recombinant Rabbit Monoclonal antibody |
| Host | Rabbit |
| Application | WB,IHC-F,IHC-P,ICC/IF,IP |
| Reactivity | Human |

Performance

| | |
|---------------------|------------------------------------------------------------------------------------------|
| Conjugation | Unconjugated |
| Modification | Phosphorylated |
| Isotype | IgG |
| Clonality | Monoclonal Antibody |
| Form | Liquid |
| Storage | Store at 4°C short term. Aliquot and store at -20°C long term. Avoid freeze/thaw cycles. |
| Buffer | 50mM Tris-Glycine(pH 7.4), 0.15M NaCl, 40% Glycerol, 0.01% Sodium azide and 0.05% BSA |
| Purification | Affinity Purified |

Immunogen

| | |
|--------------------------|-----------------------------------------------------------------------------------------------------------------------------------------------|
| Gene Name | MCM2 |
| Alternative Names | MCM2; BM28; CCNL1; CDCL1; KIAA0030; DNA replication licensing factor MCM2; Minichromosome maintenance protein 2 homolog; Nuclear protein BM28 |
| Gene ID | 4171 |
| SwissProt ID | P49736 |

Application

| | |
|-------------------------|----------------------------------------------------------|
| Dilution Ratio | WB: 1/500-1/1000 IHC: 1/50-1/100 IF: 1/50-1/200 IP: 1/20 |
| Molecular Weight | Calculated MW: 102 kDa; Observed MW: 125 kDa |

Product Name: Phospho-MCM2 (Ser27) Rabbit Monoclonal Antibody
Catalog #: AMRe02859

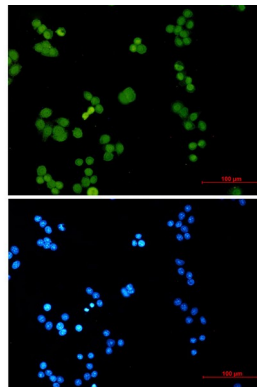
Background

The protein encoded by this gene is one of the highly conserved mini-chromosome maintenance proteins (MCM) that are involved in the initiation of eukaryotic genome replication. The hexameric protein complex formed by MCM proteins is a key component of the pre-replication complex (pre_RC) and may be involved in the formation of replication forks and in the recruitment of other DNA replication related proteins. This protein forms a complex with MCM4, 6, and 7, and has been shown to regulate the helicase activity of the complex. This protein is phosphorylated, and thus regulated by, protein kinases CDC2 and CDC7. Multiple alternatively spliced transcript variants have been found, but the full-length nature of some variants has not been defined. [provided by RefSeq, Oct 2012]

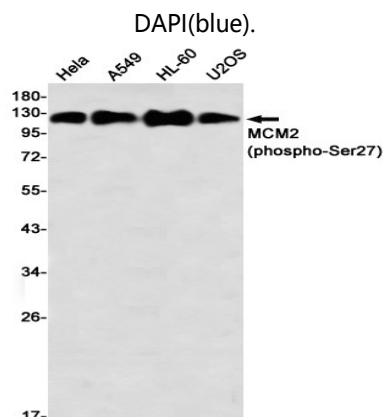
Research Area

Epigenetics and Nuclear Signaling

Image Data

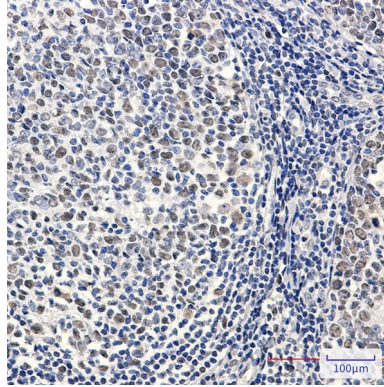


Immunocytochemistry analysis of Phospho-MCM2 (Ser27) (green) in HeLa using Phospho-MCM2 (Ser27) antibody, and



Western blot analysis of MCM2 (Phospho-Ser27) in HeLa, A549, HL-60, U2OS lysates using MCM2 (Phospho-Ser27) antibody.

**Product Name: Phospho-MCM2 (Ser27) Rabbit
Monoclonal Antibody
Catalog #: AMRe02859**



Immunohistochemistry analysis of paraffin-embedded Human tonsil using MCM2 (Phospho-Ser27) antibody. High-pressure and temperature Sodium Citrate pH 6.0 was used for antigen retrieval.

Note

For research use only.