

**Product Name: Phospho-Hormone Sensitive Lipase
(Ser855) Rabbit Monoclonal Antibody**
Catalog #: AMRe02856

Summary

Production Name	Phospho-Hormone Sensitive Lipase (Ser855) Rabbit Monoclonal Antibody
Description	Recombinant Rabbit Monoclonal antibody
Host	Rabbit
Application	WB
Reactivity	Human

Performance

Conjugation	Unconjugated
Modification	Phosphorylated
Isotype	IgG
Clonality	Monoclonal Antibody
Form	Liquid
Storage	Store at 4°C short term. Aliquot and store at -20°C long term. Avoid freeze/thaw cycles.
Buffer	50mM Tris-Glycine(pH 7.4), 0.15M NaCl, 40% Glycerol, 0.01% Sodium azide and 0.05% BSA
Purification	Affinity Purified

Immunogen

Gene Name	LIPE
Alternative Names	LIPE; Hormone-sensitive lipase; HSL
Gene ID	3991
SwissProt ID	Q05469

Application

Dilution Ratio	WB: 1/500-1/1000
Molecular Weight	Calculated MW: 117 kDa; Observed MW: 83 kDa

Product Name: Phospho-Hormone Sensitive Lipase (Ser855) Rabbit Monoclonal Antibody
Catalog #: AMRe02856

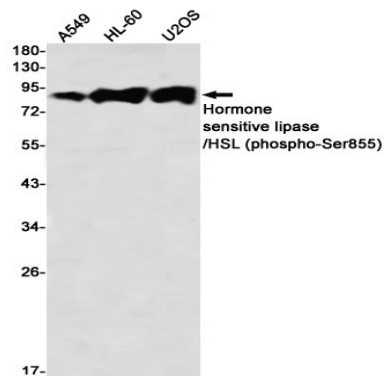
Background

hormone sensitive lipase is a lipolytic enzyme of the 'GDXG' family. Plays a rate limiting step in triglyceride lipolysis. In adipose tissue and heart, it primarily hydrolyzes stored triglycerides to free fatty acids, while in steroidogenic tissues, it principally converts cholesteryl esters to free cholesterol for steroid hormone production.

Research Area

Cardiovascular

Image Data



Western blot analysis of Hormone sensitive lipase/HSL (Phospho-Ser855) in A549, HL-60, U2OS lysates using Phospho-Hormone Sensitive Lipase (Ser855) antibody.

Note

For research use only.