

**Product Name: Phospho-Filamin A/B (Ser2152/Ser2107)  
Rabbit Monoclonal Antibody  
Catalog #: AMRe02852**

---

## Summary

<b>Production Name</b>	Phospho-Filamin A/B (Ser2152/Ser2107) Rabbit Monoclonal Antibody
<b>Description</b>	Recombinant Rabbit Monoclonal antibody
<b>Host</b>	Rabbit
<b>Application</b>	WB,IHC-F,IHC-P,ICC/IF
<b>Reactivity</b>	Human,Rat

## Performance

<b>Conjugation</b>	Unconjugated
<b>Modification</b>	Phosphorylated
<b>Isotype</b>	IgG
<b>Clonality</b>	Monoclonal Antibody
<b>Form</b>	Liquid
<b>Storage</b>	Store at 4°C short term. Aliquot and store at -20°C long term. Avoid freeze/thaw cycles.
<b>Buffer</b>	50mM Tris-Glycine(pH 7.4), 0.15M NaCl, 40% Glycerol, 0.01% Sodium azide and 0.05% BSA
<b>Purification</b>	Affinity Purified

## Immunogen

<b>Gene Name</b>	FLNB
<b>Alternative Names</b>	FLN; FMD; MNS; OPD; ABPX; CSBS; CVD1; FGS2; FLN1; NHBP; OPD1; OPD2; XLVD; XMVD; FLN-A; ABP-280
<b>Gene ID</b>	2317
<b>SwissProt ID</b>	O75369

## Application

<b>Dilution Ratio</b>	WB: 1/500-1/1000 IHC: 1/50-1/100 IF: 1/50-1/200
<b>Molecular Weight</b>	Calculated MW: 278 kDa; Observed MW: 281 kDa

**Product Name: Phospho-Filamin A/B (Ser2152/Ser2107)  
Rabbit Monoclonal Antibody  
Catalog #: AMRe02852**



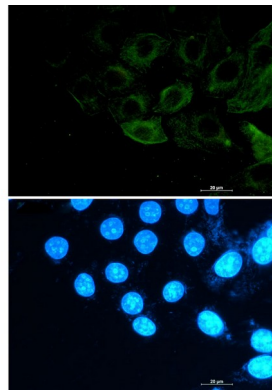
## Background

Connects cell membrane constituents to the actin cytoskeleton.

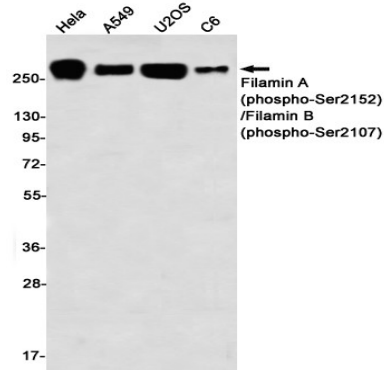
## Research Area

-

## Image Data

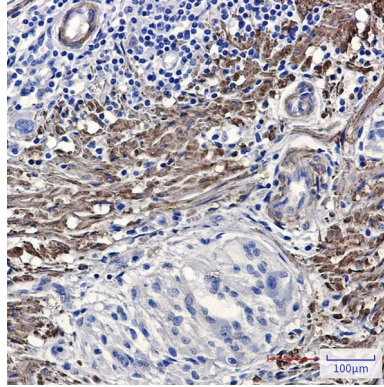


Immunocytochemistry analysis of Phospho-Filamin A/B (Ser2152/Ser2107) (green) in A549 using Phospho-Filamin A/B (Ser2152/Ser2107) antibody, and DAPI (blue).



Western blot analysis of Filamin A (Phospho-Ser2152)/Filamin B (Phospho-Ser2107) in HeLa, A549, U2OS, C6 lysates using Filamin A (Phospho-Ser2152)/Filamin B (Phospho-Ser2107) antibody.

**Product Name: Phospho-Filamin A/B (Ser2152/Ser2107)  
Rabbit Monoclonal Antibody  
Catalog #: AMRe02852**



Immunohistochemistry analysis of paraffin-embedded Human Cholangiocarcinoma using Filamin A (Phospho-Ser2152)/Filamin B (Phospho-Ser2107) antibody. High-pressure and temperature Sodium Citrate pH 6.0 was used for antigen retrieval.

**Note**

For research use only.