

**Product Name: Phospho-eIF4B (Ser406) Rabbit
Monoclonal Antibody
Catalog #: AMRe02848**

Summary

Production Name	Phospho-eIF4B (Ser406) Rabbit Monoclonal Antibody
Description	Recombinant Rabbit Monoclonal antibody
Host	Rabbit
Application	WB,IHC-P
Reactivity	Human,Mouse,Rat

Performance

Conjugation	Unconjugated
Modification	Phosphorylated
Isotype	IgG
Clonality	Monoclonal Antibody
Form	Liquid
Storage	Store at 4°C short term. Aliquot and store at -20°C long term. Avoid freeze/thaw cycles.
Buffer	50mM Tris-Glycine(pH 7.4), 0.15M NaCl, 40% Glycerol, 0.01% Sodium azide and 0.05% BSA
Purification	Affinity Purified

Immunogen

Gene Name	EIF4B
Alternative Names	EIF-4B; PRO1843
Gene ID	1975
SwissProt ID	P23588

Application

Dilution Ratio	WB: 1/500-1/1000 IHC: 1/50-1/100
Molecular Weight	Calculated MW: 69 kDa; Observed MW: 80 kDa

Product Name: Phospho-eIF4B (Ser406) Rabbit Monoclonal Antibody
Catalog #: AMRe02848

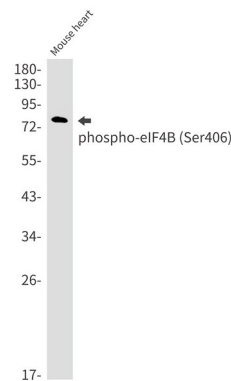
Background

The eukaryotic translation initiation factor 4B (eIF4B) plays a critical role in recruiting the 40S ribosomal subunit to the mRNA. It functions in close association with eIF4F and eIF4A. It binds near the 5'-terminal cap of mRNA in the presence of eIF4F and ATP. It promotes the ATPase activity and the ATP-dependent RNA unwinding activity of both eIF4A and eIF4F.

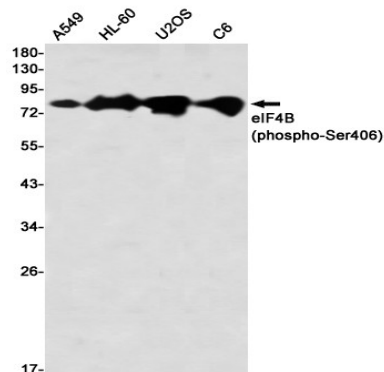
Research Area

Epigenetics and Nuclear Signaling

Image Data

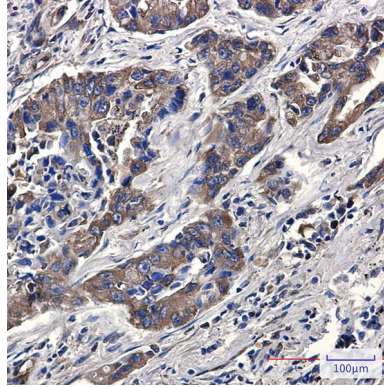


Western blot analysis of Phospho-eIF4B (Ser406) in mouse heart lysates using Phospho-eIF4B (Ser406) antibody.



Western blot analysis of eIF4B (Phospho-Ser406) in A549, HL-60, U2OS, C6 lysates using eIF4B (Phospho-Ser406) antibody.

**Product Name: Phospho-eIF4B (Ser406) Rabbit
Monoclonal Antibody
Catalog #: AMRe02848**



Immunohistochemistry analysis of paraffin-embedded Human lung cancer using eIF4B (Phospho-Ser406) antibody. High-pressure and temperature Sodium Citrate pH 6.0 was used for antigen retrieval.

Note

For research use only.