

**Product Name: Phospho-E Cadherin (Ser838/Ser840)
Rabbit Monoclonal Antibody
Catalog #: AMRe02845**



Summary

Production Name	Phospho-E Cadherin (Ser838/Ser840) Rabbit Monoclonal Antibody
Description	Recombinant Rabbit Monoclonal antibody
Host	Rabbit
Application	WB,IHC-P,IP
Reactivity	Human,Mouse

Performance

Conjugation	Unconjugated
Modification	Phosphorylated
Isotype	IgG
Clonality	Monoclonal Antibody
Form	Liquid
Storage	Store at 4°C short term. Aliquot and store at -20°C long term. Avoid freeze/thaw cycles.
Buffer	50mM Tris-Glycine(pH 7.4), 0.15M NaCl, 40% Glycerol, 0.01% Sodium azide and 0.05% BSA
Purification	Affinity Purified

Immunogen

Gene Name	CDH1
Alternative Names	CDH1; CDHE; UVO; Cadherin-1; CAM 120/80; Epithelial cadherin; E-cadherin; Uvomorulin; CD antigen CD324
Gene ID	999
SwissProt ID	P12830

Application

Dilution Ratio	WB: 1/500-1/1000 IHC: 1/50-1/100 IP: 1/20
Molecular Weight	Calculated MW: 97 kDa; Observed MW: 135 kDa

Product Name: Phospho-E Cadherin (Ser838/Ser840)
Rabbit Monoclonal Antibody
Catalog #: AMRe02845



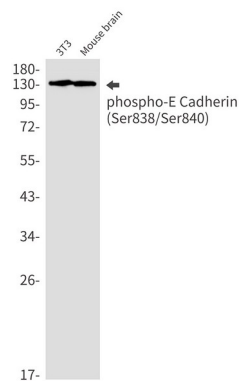
Background

CDH1 a single-pass type I membrane protein, and calcium dependent cell adhesion proteins. It is a ligand for integrin alpha-E/beta-7, and it colocalizes with DLG7 at sites of cell-cell contact in intestinal epithelial cells.

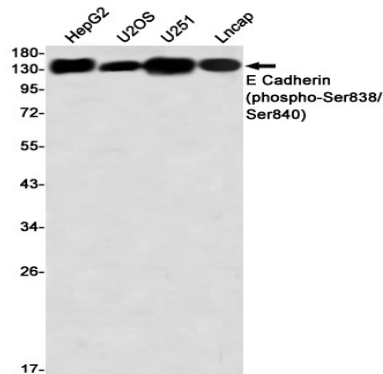
Research Area

Signal Transduction

Image Data

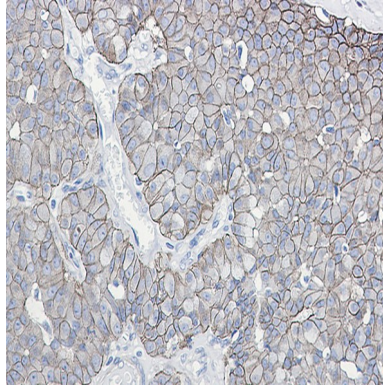


Western blot analysis of Phospho-E Cadherin (Ser838/Ser840) in 3T3, mouse brain lysates using Phospho-E Cadherin (Ser838/Ser840) antibody.



Western blot analysis of E Cadherin (Phospho-Ser838/Ser840) in HepG2, U2OS, U251, Lncap lysates using E Cadherin (Phospho-Ser838/Ser840) antibody.

**Product Name: Phospho-E Cadherin (Ser838/Ser840)
Rabbit Monoclonal Antibody
Catalog #: AMRe02845**



Immunohistochemistry analysis of paraffin-embedded Human breast cancer using E Cadherin (Phospho-Ser838/Ser840) antibody. High-pressure and temperature Sodium Citrate pH 6.0 was used for antigen retrieval.

Note

For research use only.