

**Product Name: Phospho-delta 1 Catenin (Ser268) Rabbit
Monoclonal Antibody
Catalog #: AMRe02843**

Summary

Production Name	Phospho-delta 1 Catenin (Ser268) Rabbit Monoclonal Antibody
Description	Recombinant Rabbit Monoclonal antibody
Host	Rabbit
Application	WB
Reactivity	Human,Mouse

Performance

Conjugation	Unconjugated
Modification	Phosphorylated
Isotype	IgG
Clonality	Monoclonal Antibody
Form	Liquid
Storage	Store at 4°C short term. Aliquot and store at -20°C long term. Avoid freeze/thaw cycles.
Buffer	50mM Tris-Glycine(pH 7.4), 0.15M NaCl, 40% Glycerol, 0.01% Sodium azide and 0.05% BSA
Purification	Affinity Purified

Immunogen

Gene Name	CTNND1
Alternative Names	CAS; p120; BCDS2; CTNND; P120CAS; P120CTN; p120(CAS); p120(CTN)
Gene ID	1500
SwissProt ID	O60716

Application

Dilution Ratio	WB: 1/500-1/1000
Molecular Weight	Calculated MW: 108 kDa; Observed MW: 100 kDa

**Product Name: Phospho-delta 1 Catenin (Ser268) Rabbit
Monoclonal Antibody
Catalog #: AMRe02843**

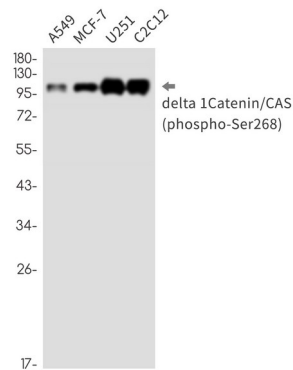
Background

Catenin δ -1 (p120 catenin) has an amino-terminal coiled-coil domain followed by a regulatory domain containing multiple phosphorylation sites and a central Armadillo repeat domain of ten linked 42-amino acid repeats. The carboxy-terminal tail has no known function. Catenin δ -1 fulfills critical roles in the regulation of cell-cell adhesion as it regulates E-cadherin turnover at the cell surface to determine the level of E-cadherin available for cell-cell adhesion.

Research Area

Cell Biology

Image Data



Western blot analysis of Phospho-delta 1 Catenin/CAS (Ser268) in A549, MCF-7, U251, C2C12 lysates using Phospho-delta 1 Catenin (Ser268) antibody.

Note

For research use only.