

**Product Name: CBX4 Rabbit Monoclonal Antibody**  
**Catalog #: AMRe02830**



---

## Summary

<b>Production Name</b>	CBX4 Rabbit Monoclonal Antibody
<b>Description</b>	Recombinant Rabbit Monoclonal antibody
<b>Host</b>	Rabbit
<b>Application</b>	WB
<b>Reactivity</b>	Human,Mouse,Rat

## Performance

<b>Conjugation</b>	Unconjugated
<b>Modification</b>	Unmodified
<b>Isotype</b>	IgG
<b>Clonality</b>	Monoclonal Antibody
<b>Form</b>	Liquid
<b>Storage</b>	Store at 4°C short term. Aliquot and store at -20°C long term. Avoid freeze/thaw cycles.
<b>Buffer</b>	50mM Tris-Glycine(pH 7.4), 0.15M NaCl, 40% Glycerol, 0.01% Sodium azide and 0.05% BSA
<b>Purification</b>	Affinity Purified

## Immunogen

<b>Gene Name</b>	CBX4
<b>Alternative Names</b>	CBX4; hPc2; NBP16; PC2
<b>Gene ID</b>	8535
<b>SwissProt ID</b>	O00257

## Application

<b>Dilution Ratio</b>	WB: 1/500-1/1000
<b>Molecular Weight</b>	Calculated MW: 61 kDa; Observed MW: 61 kDa

## Background

---

**Product Name: CBX4 Rabbit Monoclonal Antibody**  
**Catalog #: AMRe02830**

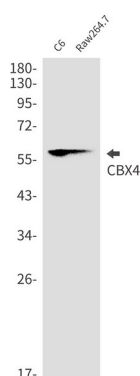


E3 SUMO-protein ligase which facilitates SUMO1 conjugation by UBE2I. Component of the Polycomb group (PcG) multiprotein PRC1 complex, a complex required to maintain the transcriptionally repressive state of many genes, including Hox genes, throughout development.

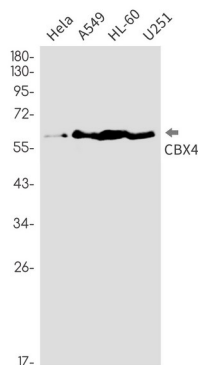
## Research Area

Epigenetics and Nuclear Signaling

## Image Data



Western blot analysis of CBX4 in C6, Raw264.7 lysates using CBX4 antibody.



Western blot analysis of CBX4 in HeLa, A549, HL-60, U251 lysates using CBX4 antibody.

## Note

For research use only.