

Summary

Production Name	SF20 Rabbit Monoclonal Antibody
Description	Recombinant Rabbit Monoclonal antibody
Host	Rabbit
Application	WB
Reactivity	Human

Performance

Conjugation	Unconjugated
Modification	Unmodified
Isotype	IgG
Clonality	Monoclonal Antibody
Form	Liquid
Storage	Store at 4°C short term. Aliquot and store at -20°C long term. Avoid freeze/thaw cycles.
Buffer	50mM Tris-Glycine(pH 7.4), 0.15M NaCl, 40% Glycerol, 0.01% Sodium azide and 0.05% BSA
Purification	Affinity Purified

Immunogen

Gene Name	MYDGF
Alternative Names	IL25; IL27; SF20; IL27w; C19orf10; R33729_1; EUROIMAGE1875335
Gene ID	56005
SwissProt ID	Q969H8

Application

Dilution Ratio	WB: 1/500-1/1000
Molecular Weight	Calculated MW: 19 kDa; Observed MW: 19 kDa

Background

Product Name: SF20 Rabbit Monoclonal Antibody
Catalog #: AMRe02819

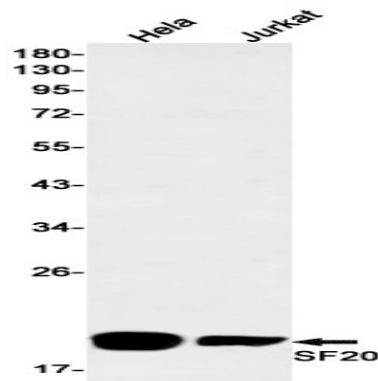


The protein encoded by this gene was previously thought to support proliferation of lymphoid cells and was considered an interleukin. However, this activity has not been reproducible and the function of this protein is currently unknown.

Research Area

Cell Biology

Image Data



Western blot analysis of SF20 in HeLa, Jurkat lysates using SF20 antibody.

Note

For research use only.