

**Product Name: Phospho-KIF22 (Ser427) Rabbit  
Monoclonal Antibody  
Catalog #: AMRe02809**

---

## Summary

<b>Production Name</b>	Phospho-KIF22 (Ser427) Rabbit Monoclonal Antibody
<b>Description</b>	Recombinant Rabbit Monoclonal antibody
<b>Host</b>	Rabbit
<b>Application</b>	WB
<b>Reactivity</b>	Human

## Performance

<b>Conjugation</b>	Unconjugated
<b>Modification</b>	Phosphorylated
<b>Isotype</b>	IgG
<b>Clonality</b>	Monoclonal Antibody
<b>Form</b>	Liquid
<b>Storage</b>	Store at 4°C short term. Aliquot and store at -20°C long term. Avoid freeze/thaw cycles.
<b>Buffer</b>	50mM Tris-Glycine(pH 7.4), 0.15M NaCl, 40% Glycerol, 0.01% Sodium azide and 0.05% BSA
<b>Purification</b>	Affinity Purified

## Immunogen

<b>Gene Name</b>	KIF22
<b>Alternative Names</b>	KIF22; KID; KNSL4; Kinesin-like protein KIF22; Kinesin-like DNA-binding protein; Kinesin-like protein 4
<b>Gene ID</b>	3835
<b>SwissProt ID</b>	Q14807

## Application

<b>Dilution Ratio</b>	WB: 1/500-1/1000
<b>Molecular Weight</b>	Calculated MW: 73 kDa; Observed MW: 73 kDa

**Product Name: Phospho-KIF22 (Ser427) Rabbit  
Monoclonal Antibody  
Catalog #: AMRe02809**

---

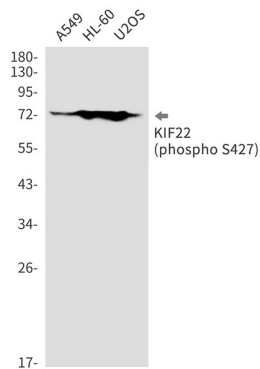
## Background

The protein encoded by this gene is a member of the kinesin-like protein family. The family members are microtubule-dependent molecular motors that transport organelles within cells and move chromosomes during cell division. The C-terminal half of this protein has been shown to bind DNA. Studies with the *Xenopus* homolog suggests its essential role in metaphase chromosome alignment and maintenance. Alternatively spliced transcript variants encoding different isoforms have been found for this gene. [provided by RefSeq, Jan 2012]

## Research Area

Signal Transduction

## Image Data



Western blot analysis of Phospho-KIF22 (Ser427) in A549, HL-60, U2OS lysates using Phospho-KIF22 (Ser427) antibody.

## Note

For research use only.