

**Product Name: Surfeit Locus Protein 4 Rabbit
Monoclonal Antibody
Catalog #: AMRe02794**

Summary

Production Name	Surfeit Locus Protein 4 Rabbit Monoclonal Antibody
Description	Recombinant Rabbit Monoclonal antibody
Host	Rabbit
Application	WB,ICC/IF
Reactivity	Human,Mouse,Rat

Performance

Conjugation	Unconjugated
Modification	Unmodified
Isotype	IgG
Clonality	Monoclonal Antibody
Form	Liquid
Storage	Store at 4°C short term. Aliquot and store at -20°C long term. Avoid freeze/thaw cycles.
Buffer	50mM Tris-Glycine(pH 7.4), 0.15M NaCl, 40% Glycerol, 0.01% Sodium azide and 0.05% BSA
Purification	Affinity Purified

Immunogen

Gene Name	SURF4
Alternative Names	ERV29
Gene ID	6836
SwissProt ID	O15260

Application

Dilution Ratio	WB: 1/500-1/1000 IF: 1/50-1/200
Molecular Weight	Calculated MW: 30 kDa; Observed MW: 30 kDa

**Product Name: Surfeit Locus Protein 4 Rabbit
Monoclonal Antibody
Catalog #: AMRe02794**

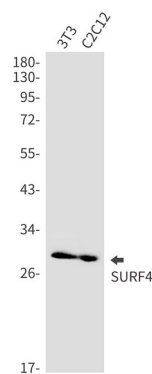
Background

This gene is located in the surfeit gene cluster, which is comprised of very tightly linked housekeeping genes that do not share sequence similarity. The encoded protein is a conserved integral membrane protein that interacts with endoplasmic reticulum-Golgi intermediate compartment proteins. Disruption of this gene results in reduced numbers of endoplasmic reticulum-Golgi intermediate compartment clusters and redistribution of coat protein I to the cytosol. Alternate splicing results in multiple transcript variants.

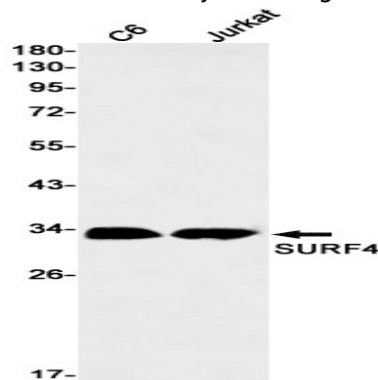
Research Area

Tags & Cell Markers

Image Data

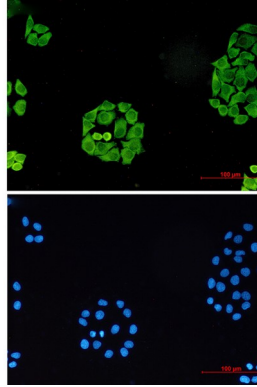


Western blot analysis of SURF4 in 3T3, C2C12 lysates using Surfeit Locus Protein 4 antibody.



Western blot analysis of SURF4 in C6, Jurkat lysates using SURF4 antibody.

**Product Name: Surfeit Locus Protein 4 Rabbit
Monoclonal Antibody
Catalog #: AMRe02794**



Immunocytochemistry analysis of SURF4 (green) in HeLa using SURF4 antibody, and DAPI (blue)

Note

For research use only.