

Product Name: XLF Rabbit Monoclonal Antibody
Catalog #: AMRe02778



Summary

Production Name	XLF Rabbit Monoclonal Antibody
Description	Recombinant Rabbit Monoclonal antibody
Host	Rabbit
Application	WB
Reactivity	Human,Mouse,Rat

Performance

Conjugation	Unconjugated
Modification	Unmodified
Isotype	IgG
Clonality	Monoclonal Antibody
Form	Liquid
Storage	Store at 4°C short term. Aliquot and store at -20°C long term. Avoid freeze/thaw cycles.
Buffer	50mM Tris-Glycine(pH 7.4), 0.15M NaCl, 40% Glycerol, 0.01% Sodium azide and 0.05% BSA
Purification	Affinity Purified

Immunogen

Gene Name	NHEJ1
Alternative Names	Cernunno; Nhej1; Non homologous end joining factor 1; Protein cernunnos; XLF; XRCC4 like factor
Gene ID	79840
SwissProt ID	Q9H9Q4

Application

Dilution Ratio	WB: 1/500-1/1000
Molecular Weight	Calculated MW: 33 kDa; Observed MW: 39 kDa

Product Name: XLF Rabbit Monoclonal Antibody
Catalog #: AMRe02778



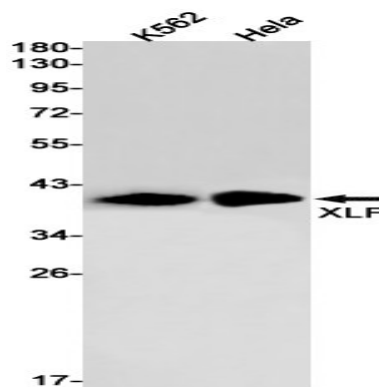
Background

DNA repair protein involved in DNA nonhomologous end joining (NHEJ) required for double-strand break (DSB) repair and V(D)J recombination.

Research Area

Epigenetics and Nuclear Signaling

Image Data



Western blot analysis of XLF in K562, HeLa lysates using XLF antibody.

Note

For research use only.