

---

## Summary

<b>Production Name</b>	WDR1 Rabbit Monoclonal Antibody
<b>Description</b>	Recombinant Rabbit Monoclonal antibody
<b>Host</b>	Rabbit
<b>Application</b>	WB,IHC-F,IHC-P,ICC/IF
<b>Reactivity</b>	Human

## Performance

<b>Conjugation</b>	Unconjugated
<b>Modification</b>	Unmodified
<b>Isotype</b>	IgG
<b>Clonality</b>	Monoclonal Antibody
<b>Form</b>	Liquid
<b>Storage</b>	Store at 4°C short term. Aliquot and store at -20°C long term. Avoid freeze/thaw cycles.
<b>Buffer</b>	50mM Tris-Glycine(pH 7.4), 0.15M NaCl, 40% Glycerol, 0.01% Sodium azide and 0.05% BSA
<b>Purification</b>	Affinity Purified

## Immunogen

<b>Gene Name</b>	WDR1
<b>Alternative Names</b>	AIP1; NORI-1; HEL-S-52
<b>Gene ID</b>	9948
<b>SwissProt ID</b>	O75083

## Application

<b>Dilution Ratio</b>	WB: 1/500-1/1000 IHC: 1/50-1/100 IF: 1/50-1/200
<b>Molecular Weight</b>	Calculated MW: 66 kDa; Observed MW: 66 kDa

## Background

---

**Product Name: WDR1 Rabbit Monoclonal Antibody**  
**Catalog #: AMRe02771**

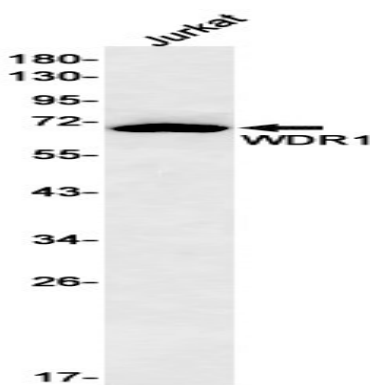


Induces disassembly of actin filaments in conjunction with ADF/cofilin family proteins (PubMed:15629458). Enhances cofilin-mediated actin severing . Involved in cytokinesis. Involved in chemotactic cell migration by restricting lamellipodial membrane protrusions (PubMed:18494608). Involved in myocardium sarcomere organization. Required for cardiomyocyte growth and maintenance . Involved in megakaryocyte maturation and platelet shedding. Required for the establishment of planar cell polarity (PCP) during follicular epithelium development and for cell shape changes during PCP; the function seems to implicate cooperation with CFL1 and/or DSTN/ADF. Involved in the generation/maintenance of cortical tension . Involved in assembly and maintenance of epithelial apical cell junctions and plays a role in the organization of the perijunctional actomyosin belt (PubMed:25792565).

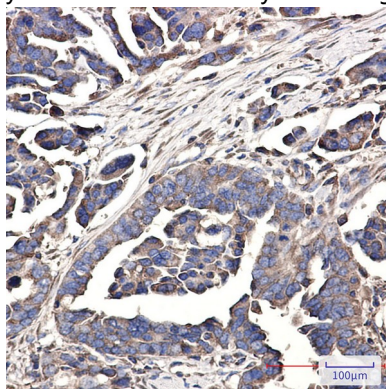
## Research Area

Signal Transduction

## Image Data

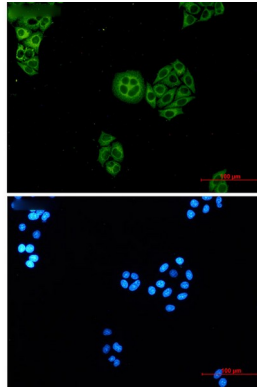


Western blot analysis of WDR1 in Jurkat lysates using WDR1 antibody.



Immunohistochemistry analysis of paraffin-embedded Human Cholangiocarcinoma using WDR1 antibody. High-pressure and temperature Sodium Citrate pH 6.0 was used for antigen retrieval.

**Product Name: WDR1 Rabbit Monoclonal Antibody**  
**Catalog #: AMRe02771**



Immunocytochemistry analysis of WDR1 (green) in HeLa using WDR1 antibody, and DAPI (blue)

**Note**

For research use only.