

**Product Name: Thioredoxin Like Protein 1 Rabbit  
Monoclonal Antibody  
Catalog #: AMRe02731**

---

## Summary

<b>Production Name</b>	Thioredoxin Like Protein 1 Rabbit Monoclonal Antibody
<b>Description</b>	Recombinant Rabbit Monoclonal antibody
<b>Host</b>	Rabbit
<b>Application</b>	WB,IHC-F,IHC-P,ICC/IF
<b>Reactivity</b>	Human,Mouse,Rat

## Performance

<b>Conjugation</b>	Unconjugated
<b>Modification</b>	Unmodified
<b>Isotype</b>	IgG
<b>Clonality</b>	Monoclonal Antibody
<b>Form</b>	Liquid
<b>Storage</b>	Store at 4°C short term. Aliquot and store at -20°C long term. Avoid freeze/thaw cycles.
<b>Buffer</b>	50mM Tris-Glycine(pH 7.4), 0.15M NaCl, 40% Glycerol, 0.01% Sodium azide and 0.05% BSA
<b>Purification</b>	Affinity Purified

## Immunogen

<b>Gene Name</b>	TXNL1
<b>Alternative Names</b>	Txl; TXNL; TRP32; TXL-1; HEL-S-114
<b>Gene ID</b>	9352
<b>SwissProt ID</b>	O43396

## Application

<b>Dilution Ratio</b>	WB: 1/500-1/1000 IHC: 1/50-1/100 IF: 1/50-1/200
<b>Molecular Weight</b>	Calculated MW: 32 kDa; Observed MW: 32 kDa

**Product Name: Thioredoxin Like Protein 1 Rabbit  
Monoclonal Antibody  
Catalog #: AMRe02731**

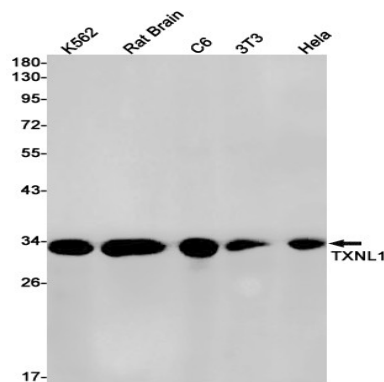
## Background

Active thioredoxin with a redox potential of about -250 mV.

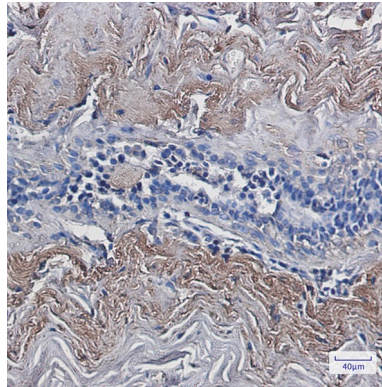
## Research Area

Signal Transduction

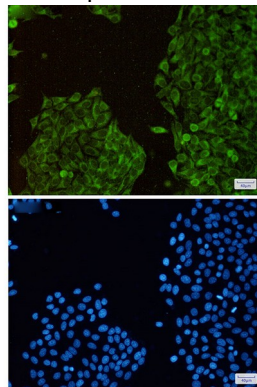
## Image Data



Western blot analysis of TXNL1 in K562, rat Brain, C6, 3T3, HeLa lysates using Thioredoxin Like Protein 1 antibody.



Immunohistochemistry analysis of paraffin-embedded Human breast cancer using TXNL1 antibody. High-pressure and temperature Sodium Citrate pH 6.0 was used for antigen retrieval.





**Product Name: Thioredoxin Like Protein 1 Rabbit  
Monoclonal Antibody  
Catalog #: AMRe02731**

---

Immunocytochemistry analysis of TXNL1(green) in Hela using TXNL1 antibody,and DAPI(blue)

**Note**

For research use only.