

**Product Name: Transcription Termination Factor 2  
Rabbit Monoclonal Antibody  
Catalog #: AMRe02728**

---

## Summary

<b>Production Name</b>	Transcription Termination Factor 2 Rabbit Monoclonal Antibody
<b>Description</b>	Recombinant Rabbit Monoclonal antibody
<b>Host</b>	Rabbit
<b>Application</b>	WB,IHC-F,IHC-P,ICC/IF
<b>Reactivity</b>	Human,Rat

## Performance

<b>Conjugation</b>	Unconjugated
<b>Modification</b>	Unmodified
<b>Isotype</b>	IgG
<b>Clonality</b>	Monoclonal Antibody
<b>Form</b>	Liquid
<b>Storage</b>	Store at 4°C short term. Aliquot and store at -20°C long term. Avoid freeze/thaw cycles.
<b>Buffer</b>	50mM Tris-Glycine(pH 7.4), 0.15M NaCl, 40% Glycerol, 0.01% Sodium azide and 0.05% BSA
<b>Purification</b>	Affinity Purified

## Immunogen

<b>Gene Name</b>	TTF2
<b>Alternative Names</b>	HuF2; ZGRF6
<b>Gene ID</b>	8458
<b>SwissProt ID</b>	Q9UNY4

## Application

<b>Dilution Ratio</b>	WB: 1/500-1/1000 IHC: 1/50-1/100 IF: 1/50-1/200
<b>Molecular Weight</b>	Calculated MW: 130 kDa; Observed MW: 130 kDa

**Product Name: Transcription Termination Factor 2  
Rabbit Monoclonal Antibody  
Catalog #: AMRe02728**

---

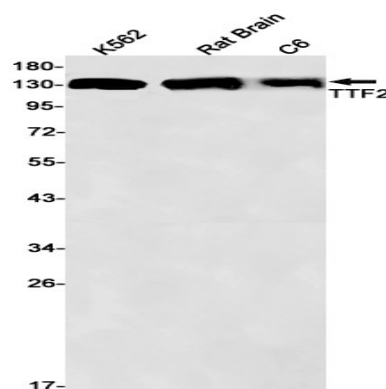
## Background

DsDNA-dependent ATPase which acts as a transcription termination factor by coupling ATP hydrolysis with removal of RNA polymerase II from the DNA template. May contribute to mitotic transcription repression. May also be involved in pre-mRNA splicing.

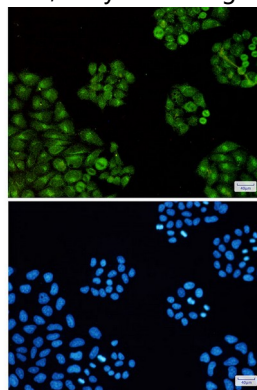
## Research Area

Epigenetics and Nuclear Signaling

## Image Data



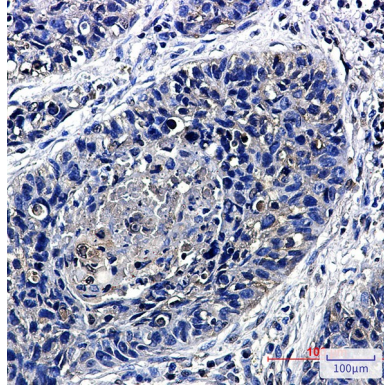
Western blot analysis of TTF2 in K562, rat Brain, C6 lysates using Transcription Termination Factor 2 antibody.



Immunocytochemistry analysis of TTF2(green) in HeLa using TTF2 antibody, and DAPI(blue)

**Product Name: Transcription Termination Factor 2  
Rabbit Monoclonal Antibody  
Catalog #: AMRe02728**

---



Immunohistochemistry analysis of paraffin-embedded Human lung cancer using TTF2 antibody. High-pressure and temperature Sodium Citrate pH 6.0 was used for antigen retrieval.

**Note**

For research use only.