

## Summary

<b>Production Name</b>	TRIM25 Rabbit Monoclonal Antibody
<b>Description</b>	Recombinant Rabbit Monoclonal antibody
<b>Host</b>	Rabbit
<b>Application</b>	WB,ICC/IF,IP
<b>Reactivity</b>	Human,Rat

## Performance

<b>Conjugation</b>	Unconjugated
<b>Modification</b>	Unmodified
<b>Isotype</b>	IgG
<b>Clonality</b>	Monoclonal Antibody
<b>Form</b>	Liquid
<b>Storage</b>	Store at 4°C short term. Aliquot and store at -20°C long term. Avoid freeze/thaw cycles.
<b>Buffer</b>	50mM Tris-Glycine(pH 7.4), 0.15M NaCl, 40% Glycerol, 0.01% Sodium azide and 0.05% BSA
<b>Purification</b>	Affinity Purified

## Immunogen

<b>Gene Name</b>	TRIM25 TRIM25; EFP; RNF147; ZNF147; E3 ubiquitin/ISG15 ligase TRIM25; Estrogen-responsive
<b>Alternative Names</b>	finger protein; RING finger protein 147; Tripartite motif-containing protein 25; Ubiquitin/ISG15-conjugating enzyme TRIM25; Zinc finger protein 147
<b>Gene ID</b>	7706
<b>SwissProt ID</b>	Q14258

## Application

<b>Dilution Ratio</b>	WB: 1/500-1/1000 IF: 1/50-1/200 IP: 1/20
<b>Molecular Weight</b>	Calculated MW: 71 kDa; Observed MW: 71 kDa

**Product Name: TRIM25 Rabbit Monoclonal Antibody**  
**Catalog #: AMRe02719**



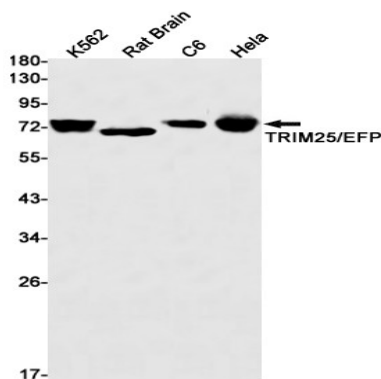
## Background

Functions as an ubiquitin E3 ligase and as an ISG15 E3 ligase. Involved in innate immune defense against viruses by mediating ubiquitination of DDX58. Mediates 'Lys-63'-linked polyubiquitination of the DDX58 N-terminal CARD-like region which is crucial for triggering the cytosolic signal transduction that leads to the production of interferons in response to viral infection.

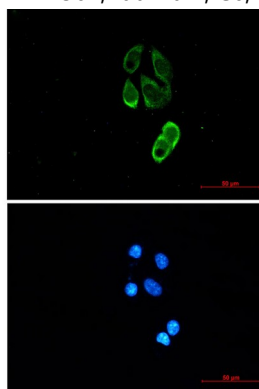
## Research Area

Cell Biology

## Image Data



Western blot analysis of TRIM25/EFP in K562, rat Brain, C6, HeLa lysates using TRIM25 antibody.



Immunocytochemistry analysis of TRIM25/EFP (green) in MCF-7 using TRIM25/EFP antibody, and DAPI (blue)

## Note

For research use only.