

**Product Name: Transmembrane Protein 43 Rabbit
Monoclonal Antibody
Catalog #: AMRe02698**

Summary

Production Name	Transmembrane Protein 43 Rabbit Monoclonal Antibody
Description	Recombinant Rabbit Monoclonal antibody
Host	Rabbit
Application	WB,IHC-P
Reactivity	Human,Rat

Performance

Conjugation	Unconjugated
Modification	Unmodified
Isotype	IgG
Clonality	Monoclonal Antibody
Form	Liquid
Storage	Store at 4°C short term. Aliquot and store at -20°C long term. Avoid freeze/thaw cycles.
Buffer	50mM Tris-Glycine(pH 7.4), 0.15M NaCl, 40% Glycerol, 0.01% Sodium azide and 0.05% BSA
Purification	Affinity Purified

Immunogen

Gene Name	TMEM43
Alternative Names	LUMA; ARVC5; ARVD5; EDMD7
Gene ID	79188
SwissProt ID	Q9BTV4

Application

Dilution Ratio	WB: 1/500-1/1000 IHC: 1/50-1/100
Molecular Weight	Calculated MW: 45 kDa; Observed MW: 45 kDa

**Product Name: Transmembrane Protein 43 Rabbit
Monoclonal Antibody
Catalog #: AMRe02698**

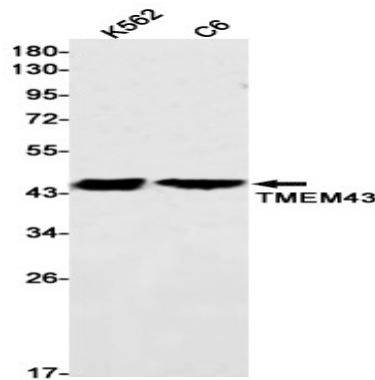
Background

May have an important role in maintaining nuclear envelope structure by organizing protein complexes at the inner nuclear membrane. Required for retaining emerin at the inner nuclear membrane .

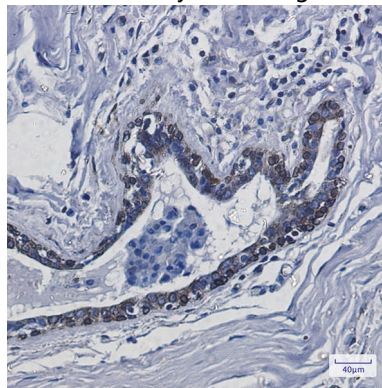
Research Area

Tags & Cell Markers

Image Data



Western blot analysis of TMEM43 in K562, C6 lysates using Transmembrane Protein 43 antibody.



Immunohistochemistry analysis of paraffin-embedded Human breast cancer using TMEM43 antibody. High-pressure and temperature Sodium Citrate pH 6.0 was used for antigen retrieval.

Note

For research use only.