
Summary

Production Name	TIMM44 Rabbit Monoclonal Antibody
Description	Recombinant Rabbit Monoclonal antibody
Host	Rabbit
Application	WB,ICC/IF,IP
Reactivity	Human

Performance

Conjugation	Unconjugated
Modification	Unmodified
Isotype	IgG
Clonality	Monoclonal Antibody
Form	Liquid
Storage	Store at 4°C short term. Aliquot and store at -20°C long term. Avoid freeze/thaw cycles.
Buffer	50mM Tris-Glycine(pH 7.4), 0.15M NaCl, 40% Glycerol, 0.01% Sodium azide and 0.05% BSA
Purification	Affinity Purified

Immunogen

Gene Name	TIMM44
Alternative Names	TIM44
Gene ID	10469
SwissProt ID	O43615

Application

Dilution Ratio	WB: 1/500-1/1000 IF: 1/50-1/200 IP: 1/20
Molecular Weight	Calculated MW: 51 kDa; Observed MW: 45 kDa

Background

Product Name: TIMM44 Rabbit Monoclonal Antibody
Catalog #: AMRe02692

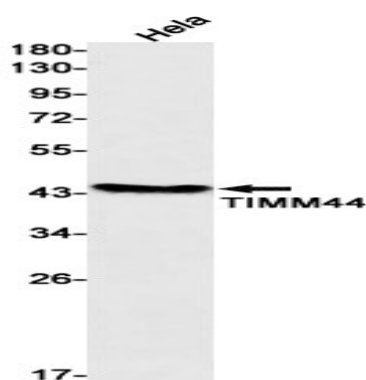


Essential component of the PAM complex, a complex required for the translocation of transit peptide-containing proteins from the inner membrane into the mitochondrial matrix in an ATP-dependent manner. Recruits mitochondrial HSP70 to drive protein translocation into the matrix using ATP as an energy source.

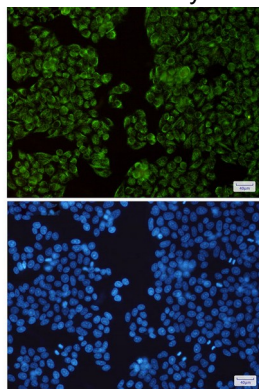
Research Area

Endocrine & Metabolism

Image Data



Western blot analysis of TIMM44 in HeLa lysates using TIMM44 antibody.



Immunocytochemistry analysis of TIMM44(green) in HeLa using TIMM44 antibody, and DAPI(blue)

Note

For research use only.