
Summary

| | |
|------------------------|--|
| Production Name | TIAM2 Rabbit Monoclonal Antibody |
| Description | Recombinant Rabbit Monoclonal antibody |
| Host | Rabbit |
| Application | WB,IHC-F,IHC-P,ICC/IF |
| Reactivity | Human |

Performance

| | |
|---------------------|--|
| Conjugation | Unconjugated |
| Modification | Unmodified |
| Isotype | IgG |
| Clonality | Monoclonal Antibody |
| Form | Liquid |
| Storage | Store at 4°C short term. Aliquot and store at -20°C long term. Avoid freeze/thaw cycles. |
| Buffer | 50mM Tris-Glycine(pH 7.4), 0.15M NaCl, 40% Glycerol, 0.01% Sodium azide and 0.05% BSA |
| Purification | Affinity Purified |

Immunogen

| | |
|--------------------------|--------------|
| Gene Name | TIAM2 |
| Alternative Names | STEF; TIAM-2 |
| Gene ID | 26230 |
| SwissProt ID | Q8IVF5 |

Application

| | |
|-------------------------|---|
| Dilution Ratio | WB: 1/500-1/1000 IHC: 1/50-1/100 IF: 1/50-1/200 |
| Molecular Weight | Calculated MW: 190 kDa; Observed MW: 190 kDa |

Background

Product Name: TIAM2 Rabbit Monoclonal Antibody
Catalog #: AMRe02690

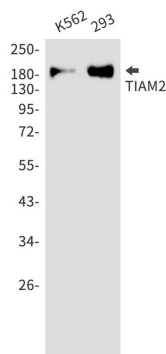


Modulates the activity of RHO-like proteins and connects extracellular signals to cytoskeletal activities. Acts as a GDP-dissociation stimulator protein that stimulates the GDP-GTP exchange activity of RHO-like GTPases and activates them. Mediates extracellular laminin signals to activate Rac1, contributing to neurite growth. Involved in lamellipodial formation and advancement of the growth cone of embryonic hippocampal neurons. Promotes migration of neurons in the cerebral cortex. When overexpressed, induces membrane ruffling accompanied by the accumulation of actin filaments along the altered plasma membrane . Activates specifically RAC1, but not CDC42 and RHOA.

Research Area

Signal Transduction

Image Data



Western blot analysis of TIAM2 in K562, 293 lysates using TIAM2 antibody.

Note

For research use only.