

**Product Name: Thioredoxin 2 Rabbit Monoclonal Antibody**  
**Catalog #: AMRe02686**

---

## Summary

|                        |  |
|------------------------|--|
| <b>Production Name</b> | Thioredoxin 2 Rabbit Monoclonal Antibody |
| <b>Description</b>     | Recombinant Rabbit Monoclonal antibody   |
| <b>Host</b>            | Rabbit                                   |
| <b>Application</b>     | WB,IHC-F,IHC-P,ICC/IF                    |
| <b>Reactivity</b>      | Human,Mouse,Rat                          |

## Performance

|                     |  |
|---------------------|--|
| <b>Conjugation</b>  | Unconjugated   |
| <b>Modification</b> | Unmodified   |
| <b>Isotype</b>      | IgG  |
| <b>Clonality</b>    | Monoclonal Antibody  |
| <b>Form</b>         | Liquid   |
| <b>Storage</b>      | Store at 4°C short term. Aliquot and store at -20°C long term. Avoid freeze/thaw cycles. |
| <b>Buffer</b>       | 50mM Tris-Glycine(pH 7.4), 0.15M NaCl, 40% Glycerol, 0.01% Sodium azide and 0.05% BSA    |
| <b>Purification</b> | Affinity Purified  |

## Immunogen

|                          |                                  |
|--------------------------|----------------------------------|
| <b>Gene Name</b>         | TXN2                             |
| <b>Alternative Names</b> | TXN; MTRX; TRX2; MT-TRX; COXPD29 |
| <b>Gene ID</b>           | 25828                            |
| <b>SwissProt ID</b>      | Q99757                           |

## Application

|                         |   |
|-------------------------|---|
| <b>Dilution Ratio</b>   | WB: 1/500-1/1000 IHC: 1/50-1/100 IF: 1/50-1/200 |
| <b>Molecular Weight</b> | Calculated MW: 18 kDa; Observed MW: 13 kDa      |

**Product Name: Thioredoxin 2 Rabbit Monoclonal Antibody**  
**Catalog #: AMRe02686**



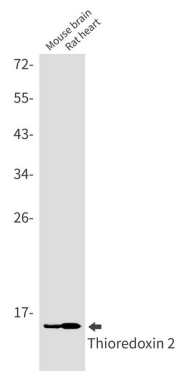
## Background

Thioredoxins (Trx) are small, multi-functional proteins with oxidoreductase activity and are ubiquitous in essentially all living cells. Trx contains a redox-active disulfide/dithiol group within the conserved Cys-Gly-Pro-Cys active site.

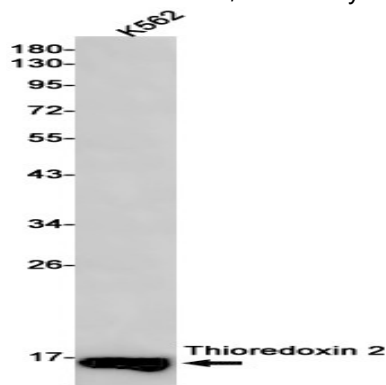
## Research Area

Signal Transduction

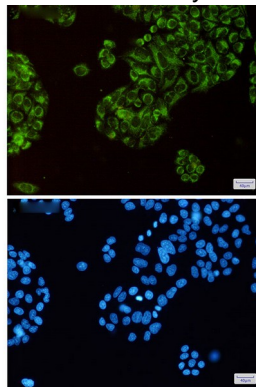
## Image Data



Western blot analysis of Thioredoxin 2 in mouse brain, rat heart lysates using Thioredoxin 2 antibody.



Western blot analysis of Thioredoxin 2 in K562 lysates using Thioredoxin 2 antibody.

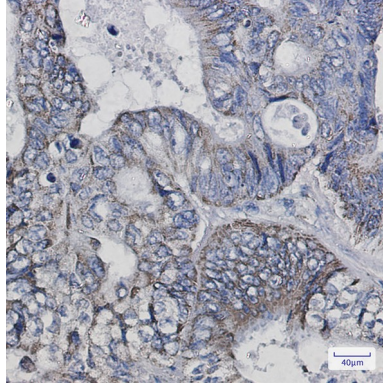


**Product Name: Thioredoxin 2 Rabbit Monoclonal Antibody**  
**Catalog #: AMRe02686**



---

Immunocytochemistry analysis of Thioredoxin 2(green) in Hela using Thioredoxin 2 antibody,and DAPI(blue)



Immunohistochemistry analysis of paraffin-embedded Human colon cancer using Thioredoxin 2 antibody.High-pressure and temperature Sodium Citrate pH 6.0 was used for antigen retrieval.

### **Note**

For research use only.