

**Product Name: Transcriptional Enhancer Factor TEF 1  
Rabbit Monoclonal Antibody  
Catalog #: AMRe02680**

---



## Summary

<b>Production Name</b>	Transcriptional Enhancer Factor TEF 1 Rabbit Monoclonal Antibody
<b>Description</b>	Recombinant Rabbit Monoclonal antibody
<b>Host</b>	Rabbit
<b>Application</b>	WB
<b>Reactivity</b>	Human,Rat,Hamster

## Performance

<b>Conjugation</b>	Unconjugated
<b>Modification</b>	Unmodified
<b>Isotype</b>	IgG
<b>Clonality</b>	Monoclonal Antibody
<b>Form</b>	Liquid
<b>Storage</b>	Store at 4°C short term. Aliquot and store at -20°C long term. Avoid freeze/thaw cycles.
<b>Buffer</b>	50mM Tris-Glycine(pH 7.4), 0.15M NaCl, 40% Glycerol, 0.01% Sodium azide and 0.05% BSA
<b>Purification</b>	Affinity Purified

## Immunogen

<b>Gene Name</b>	TEAD1
<b>Alternative Names</b>	TEAD1; TCF13; TEF1; Transcriptional enhancer factor TEF-1; NTEF-1; Protein GT-IIC; TEA domain family member 1; TEAD-1; Transcription factor 13; TCF-13
<b>Gene ID</b>	7003
<b>SwissProt ID</b>	P28347

## Application

<b>Dilution Ratio</b>	WB: 1/500-1/1000
<b>Molecular Weight</b>	Calculated MW: 48 kDa; Observed MW: 48 kDa

**Product Name: Transcriptional Enhancer Factor TEF 1**  
**Rabbit Monoclonal Antibody**  
**Catalog #: AMRe02680**



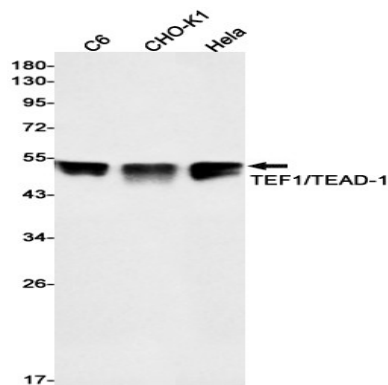
## Background

Transcription factor which plays a key role in the Hippo signaling pathway, a pathway involved in organ size control and tumor suppression by restricting proliferation and promoting apoptosis.

## Research Area

Epigenetics and Nuclear Signaling

## Image Data



Western blot analysis of TEF1/TEAD1 in C6, CHO-K1, HeLa lysates using Transcriptional Enhancer Factor TEF 1 antibody.

## Note

For research use only.