

**Product Name: Synaptophysin Like Protein 1 Rabbit
Monoclonal Antibody
Catalog #: AMRe02660**



Summary

Production Name	Synaptophysin Like Protein 1 Rabbit Monoclonal Antibody
Description	Recombinant Rabbit Monoclonal antibody
Host	Rabbit
Application	WB,IHC-P
Reactivity	Human

Performance

Conjugation	Unconjugated
Modification	Unmodified
Isotype	IgG
Clonality	Monoclonal Antibody
Form	Liquid
Storage	Store at 4°C short term. Aliquot and store at -20°C long term. Avoid freeze/thaw cycles.
Buffer	50mM Tris-Glycine(pH 7.4), 0.15M NaCl, 40% Glycerol, 0.01% Sodium azide and 0.05% BSA
Purification	Affinity Purified

Immunogen

Gene Name	SYPL1
Alternative Names	Pantophysin; SYPL1
Gene ID	6856
SwissProt ID	Q16563

Application

Dilution Ratio	WB: 1/500-1/1000 IHC: 1/50-1/100
Molecular Weight	Calculated MW: 29 kDa; Observed MW: 29 kDa

**Product Name: Synaptophysin Like Protein 1 Rabbit
Monoclonal Antibody
Catalog #: AMRe02660**



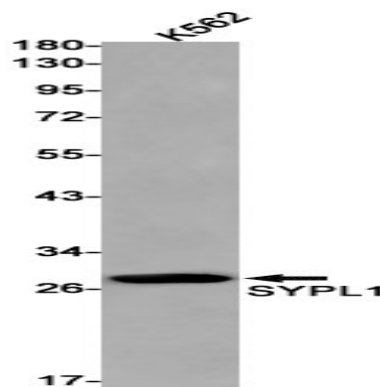
Background

Predicted to be involved in chemical synaptic transmission. Located in extracellular exosome.

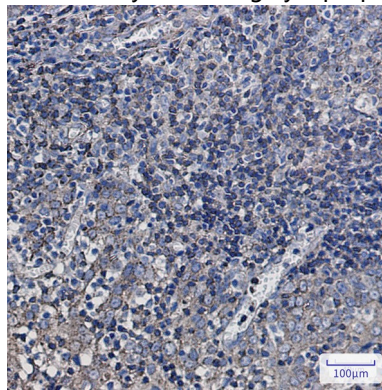
Research Area

Neuroscience

Image Data



Western blot analysis of SYPL1 in K562 lysates using Synaptophysin Like Protein 1 antibody.



Immunohistochemistry analysis of paraffin-embedded Human tonsil using SYPL1 antibody. High-pressure and temperature Sodium Citrate pH 6.0 was used for antigen retrieval.

Note

For research use only.