

Product Name: Syntrophin alpha 1 Rabbit Monoclonal Antibody
Catalog #: AMRe02659



Summary

Production Name	Syntrophin alpha 1 Rabbit Monoclonal Antibody
Description	Recombinant Rabbit Monoclonal antibody
Host	Rabbit
Application	WB,IHC-F,IHC-P,ICC/IF
Reactivity	Human

Performance

Conjugation	Unconjugated
Modification	Unmodified
Isotype	IgG
Clonality	Monoclonal Antibody
Form	Liquid
Storage	Store at 4°C short term. Aliquot and store at -20°C long term. Avoid freeze/thaw cycles.
Buffer	50mM Tris-Glycine(pH 7.4), 0.15M NaCl, 40% Glycerol, 0.01% Sodium azide and 0.05% BSA
Purification	Affinity Purified

Immunogen

Gene Name	SNTA1
Alternative Names	Alpha 1 syntrophin; LQT12; SNT1; Snta1; Syntrophin 1; TACIP1
Gene ID	6640
SwissProt ID	Q13424

Application

Dilution Ratio	WB: 1/500-1/1000 IHC: 1/50-1/100 IF: 1/50-1/200
Molecular Weight	Calculated MW: 54 kDa; Observed MW: 54 kDa

Product Name: Syntrophin alpha 1 Rabbit Monoclonal Antibody
Catalog #: AMRe02659



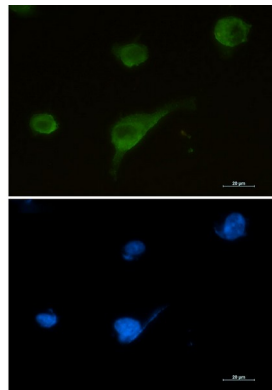
Background

Adapter protein that binds to and probably organizes the subcellular localization of a variety of membrane proteins. May link various receptors to the actin cytoskeleton and the extracellular matrix via the dystrophin glycoprotein complex.

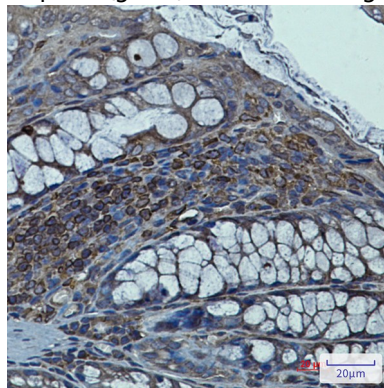
Research Area

Signal Transduction

Image Data

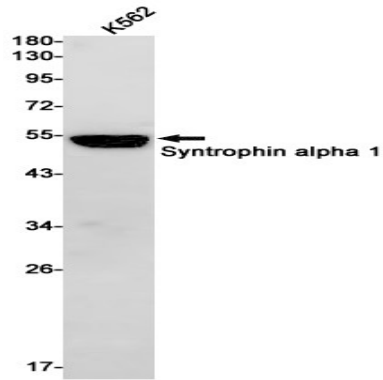


Immunocytochemistry analysis of Syntrophin alpha 1 (green) in U87-MG using Syntrophin alpha 1 antibody, and DAPI (blue).



Immunohistochemistry analysis of paraffin-embedded mouse colon using Syntrophin alpha 1 antibody. High-pressure and temperature Sodium Citrate pH 6.0 was used for antigen retrieval.

Product Name: Syntrophin alpha 1 Rabbit Monoclonal Antibody
Catalog #: AMRe02659



Western blot analysis of Syntrophin alpha 1 in K562 lysates using Syntrophin alpha 1 antibody

Note

For research use only.