

---

## Summary

<b>Production Name</b>	Syntaxin 4 Rabbit Monoclonal Antibody
<b>Description</b>	Recombinant Rabbit Monoclonal antibody
<b>Host</b>	Rabbit
<b>Application</b>	WB
<b>Reactivity</b>	Human,Mouse,Rat

## Performance

<b>Conjugation</b>	Unconjugated
<b>Modification</b>	Unmodified
<b>Isotype</b>	IgG
<b>Clonality</b>	Monoclonal Antibody
<b>Form</b>	Liquid
<b>Storage</b>	Store at 4°C short term. Aliquot and store at -20°C long term. Avoid freeze/thaw cycles.
<b>Buffer</b>	50mM Tris-Glycine(pH 7.4), 0.15M NaCl, 40% Glycerol, 0.01% Sodium azide and 0.05% BSA
<b>Purification</b>	Affinity Purified

## Immunogen

<b>Gene Name</b>	STX4
<b>Alternative Names</b>	p35 2; PLACENTAL; Stx4; STX4A; Syntaxin 4; syntaxin 4A
<b>Gene ID</b>	6810
<b>SwissProt ID</b>	Q12846

## Application

<b>Dilution Ratio</b>	WB: 1/500-1/1000
<b>Molecular Weight</b>	Calculated MW: 34 kDa; Observed MW: 34 kDa

## Background

---

**Product Name: Syntaxin 4 Rabbit Monoclonal Antibody**  
**Catalog #: AMRe02658**

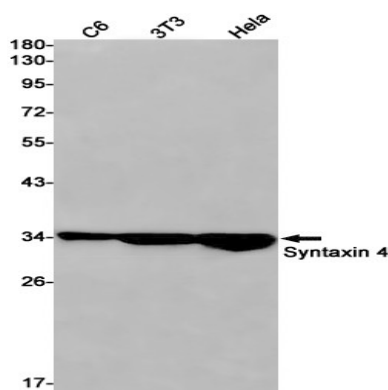


Plasma membrane t-SNARE that mediates docking of transport vesicles. Necessary for the translocation of SLC2A4 from intracellular vesicles to the plasma membrane.

## Research Area

Neuroscience

## Image Data



Western blot analysis of Syntaxin 4 in C6, 3T3, HeLa lysates using Syntaxin 4 antibody.

## Note

For research use only.