

Product Name: Synaptophysin Rabbit Monoclonal Antibody
Catalog #: AMRe02655

Summary

Production Name	Synaptophysin Rabbit Monoclonal Antibody
Description	Recombinant Rabbit Monoclonal antibody
Host	Rabbit
Application	WB,IHC-F,IHC-P,ICC/IF
Reactivity	Human,Rat

Performance

Conjugation	Unconjugated
Modification	Unmodified
Isotype	IgG
Clonality	Monoclonal Antibody
Form	Liquid
Storage	Store at 4°C short term. Aliquot and store at -20°C long term. Avoid freeze/thaw cycles.
Buffer	50mM Tris-Glycine(pH 7.4), 0.15M NaCl, 40% Glycerol, 0.01% Sodium azide and 0.05% BSA
Purification	Affinity Purified

Immunogen

Gene Name	SYP
Alternative Names	SYP; Synaptophysin; Major synaptic vesicle protein p38
Gene ID	6855
SwissProt ID	P08247

Application

Dilution Ratio	WB: 1/500-1/1000 IHC: 1/50-1/100 IF: 1/50-1/200
Molecular Weight	Calculated MW: 34 kDa; Observed MW: 38 kDa

Product Name: Synaptophysin Rabbit Monoclonal Antibody
Catalog #: AMRe02655

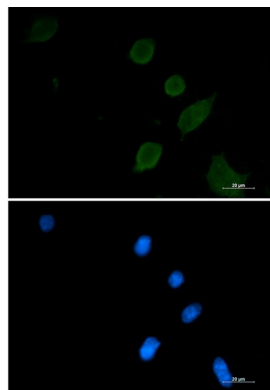
Background

SYP Possibly involved in structural functions as organizing other membrane components or in targeting the vesicles to the plasma membrane. Involved in the regulation of short-term and long-term synaptic plasticity. Belongs to the synaptophysin/synaptobrevin family. Homohexamer or homotetramer. Note: This description may include information from UniProtKB.

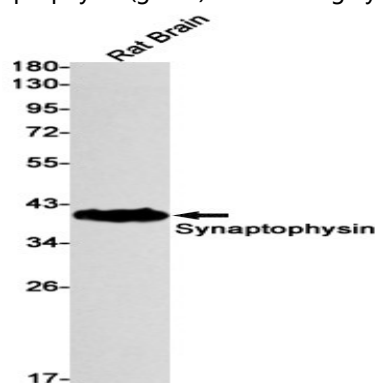
Research Area

Neuroscience

Image Data

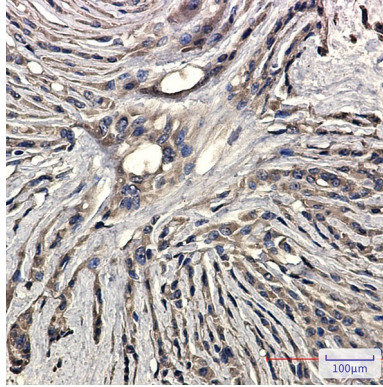


Immunocytochemistry analysis of Synaptophysin (green) in 3T3 using Synaptophysin antibody, and DAPI (blue).



Western blot analysis of Synaptophysin in rat Brain lysates using Synaptophysin antibody.

Product Name: Synaptophysin Rabbit Monoclonal Antibody
Catalog #: AMRe02655



Immunohistochemistry analysis of paraffin-embedded Human Brain using Synaptophysin antibody. High-pressure and temperature Sodium Citrate pH 6.0 was used for antigen retrieval.

Note

For research use only.