

Summary

Production Name	SUN1 Rabbit Monoclonal Antibody
Description	Recombinant Rabbit Monoclonal antibody
Host	Rabbit
Application	WB,IHC-F,IHC-P,ICC/IF
Reactivity	Human

Performance

Conjugation	Unconjugated
Modification	Unmodified
Isotype	IgG
Clonality	Monoclonal Antibody
Form	Liquid
Storage	Store at 4°C short term. Aliquot and store at -20°C long term. Avoid freeze/thaw cycles.
Buffer	50mM Tris-Glycine(pH 7.4), 0.15M NaCl, 40% Glycerol, 0.01% Sodium azide and 0.05% BSA
Purification	Affinity Purified

Immunogen

Gene Name	SUN1
Alternative Names	Sun1; UNC84A
Gene ID	23353
SwissProt ID	O94901

Application

Dilution Ratio	WB: 1/500-1/1000 IHC: 1/50-1/100 IF: 1/50-1/200
Molecular Weight	Calculated MW: 87 kDa; Observed MW: 90 kDa

Background

Product Name: SUN1 Rabbit Monoclonal Antibody
Catalog #: AMRe02650

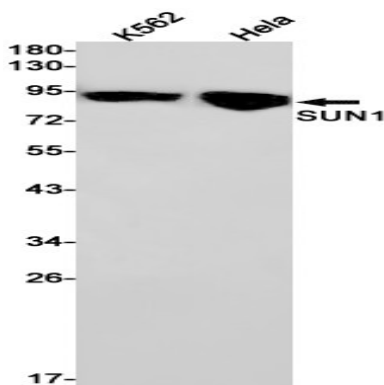


Component of SUN-protein-containing multivariate complexes also called LINC complexes which link the nucleoskeleton and cytoskeleton by providing versatile outer nuclear membrane attachment sites for cytoskeletal filaments.

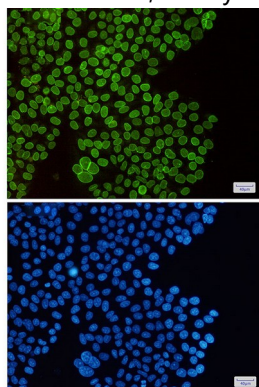
Research Area

Tags & Cell Markers

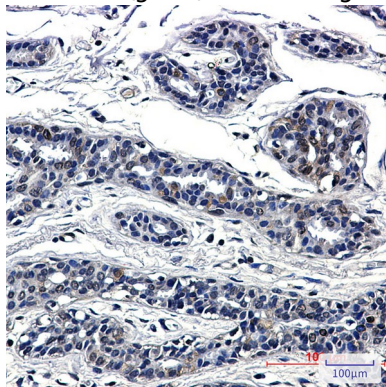
Image Data



Western blot analysis of SUN1 in K562, HeLa lysates using SUN1 antibody.



Immunocytochemistry analysis of SUN1 (green) in HeLa using SUN1 antibody, and DAPI (blue)



Immunohistochemistry analysis of paraffin-embedded Human breast cancer using SUN1 antibody. High-pressure and temperature Sodium Citrate pH 6.0 was used for antigen retrieval.

Product Name: SUN1 Rabbit Monoclonal Antibody
Catalog #: AMRe02650



Note

For research use only.