

Summary

Production Name	STUB1 Rabbit Monoclonal Antibody
Description	Recombinant Rabbit Monoclonal antibody
Host	Rabbit
Application	WB,ICC/IF,IP
Reactivity	Human,Mouse,Rat

Performance

Conjugation	Unconjugated
Modification	Unmodified
Isotype	IgG
Clonality	Monoclonal Antibody
Form	Liquid
Storage	Store at 4°C short term. Aliquot and store at -20°C long term. Avoid freeze/thaw cycles.
Buffer	50mM Tris-Glycine(pH 7.4), 0.15M NaCl, 40% Glycerol, 0.01% Sodium azide and 0.05% BSA
Purification	Affinity Purified

Immunogen

Gene Name	STUB1
Alternative Names	STUB1; CHIP; HSPABP2; NY-CO-7; SDCCAG7; UBOX1
Gene ID	10273
SwissProt ID	Q9UNE7

Application

Dilution Ratio	WB: 1/500-1/1000 IF: 1/50-1/200 IP: 1/20
Molecular Weight	Calculated MW: 35 kDa; Observed MW: 35 kDa

Background

Product Name: STUB1 Rabbit Monoclonal Antibody
Catalog #: AMRe02647

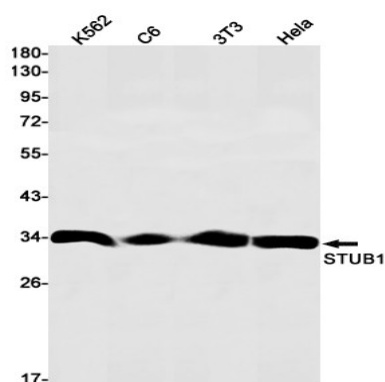


E3 ubiquitin-protein ligase which targets misfolded chaperone substrates towards proteasomal degradation. Ubiquitinates NOS1 in concert with Hsp70 and Hsp40. Modulates the activity of several chaperone complexes, including Hsp70, Hsc70 and Hsp90.

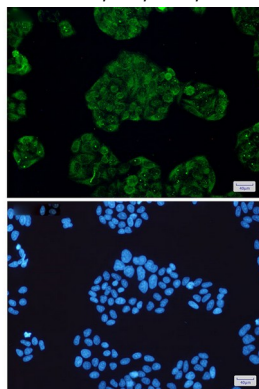
Research Area

Signal Transduction

Image Data



Western blot analysis of STUB1 in K562, C6, 3T3, HeLa lysates using STUB1 antibody.



Immunocytochemistry analysis of STUB1(green) in HeLa using STUB1 antibody, and DAPI(blue)

Note

For research use only.