

Product Name: Spermine Synthase Rabbit Monoclonal Antibody
Catalog #: AMRe02630



Summary

Production Name	Spermine Synthase Rabbit Monoclonal Antibody
Description	Recombinant Rabbit Monoclonal antibody
Host	Rabbit
Application	WB
Reactivity	Human

Performance

Conjugation	Unconjugated
Modification	Unmodified
Isotype	IgG
Clonality	Monoclonal Antibody
Form	Liquid
Storage	Store at 4°C short term. Aliquot and store at -20°C long term. Avoid freeze/thaw cycles.
Buffer	50mM Tris-Glycine(pH 7.4), 0.15M NaCl, 40% Glycerol, 0.01% Sodium azide and 0.05% BSA
Purification	Affinity Purified

Immunogen

Gene Name	SMS
Alternative Names	SRS; SpS; MRSR; SPMSY
Gene ID	6611
SwissProt ID	P52788

Application

Dilution Ratio	WB: 1/500-1/1000
Molecular Weight	Calculated MW: 41 kDa; Observed MW: 41 kDa

Product Name: Spermine Synthase Rabbit Monoclonal Antibody
Catalog #: AMRe02630



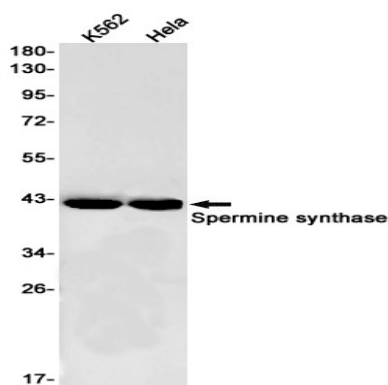
Background

This gene encodes a protein belonging to the spermidine/spermin synthase family. Pseudogenes of this gene are located on chromosomes 1, 5, 6 and X. Mutations in this gene are associated with X-linked Snyder-Robinson mental retardation syndrome. Multiple transcript variants encoding different isoforms have been found for this gene.

Research Area

Signal Transduction

Image Data



Western blot analysis of Spermine synthase in K562, HeLa lysates using Spermine Synthase antibody.

Note

For research use only.