
Summary

Production Name	SP1 Rabbit Monoclonal Antibody
Description	Recombinant Rabbit Monoclonal antibody
Host	Rabbit
Application	WB,IHC-F,IHC-P,ICC/IF
Reactivity	Human,Mouse

Performance

Conjugation	Unconjugated
Modification	Unmodified
Isotype	IgG
Clonality	Monoclonal Antibody
Form	Liquid
Storage	Store at 4°C short term. Aliquot and store at -20°C long term. Avoid freeze/thaw cycles.
Buffer	50mM Tris-Glycine(pH 7.4), 0.15M NaCl, 40% Glycerol, 0.01% Sodium azide and 0.05% BSA
Purification	Affinity Purified

Immunogen

Gene Name	SP1
Alternative Names	SP1; TSFP1; Transcription factor Sp1
Gene ID	6667
SwissProt ID	P08047

Application

Dilution Ratio	WB: 1/500-1/1000 IHC: 1/50-1/100 IF: 1/50-1/200
Molecular Weight	Calculated MW: 81 kDa; Observed MW: 90 kDa

Background

Product Name: SP1 Rabbit Monoclonal Antibody
Catalog #: AMRe02628

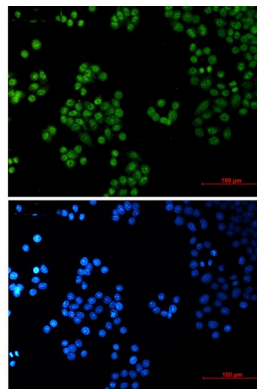


SP1 is a transcription factor of the Sp1 C2H2-type zinc-finger protein family. Phosphorylated and activated by MAPK. Dephosphorylation by PTEN inhibits DNA binding. Binds to p38 in the nucleus.

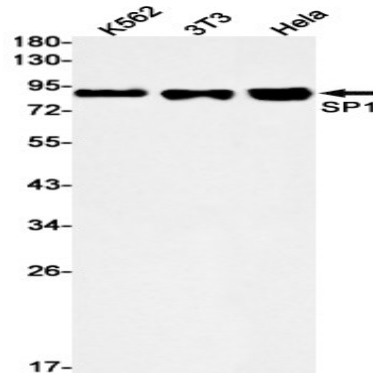
Research Area

Epigenetics and Nuclear Signaling

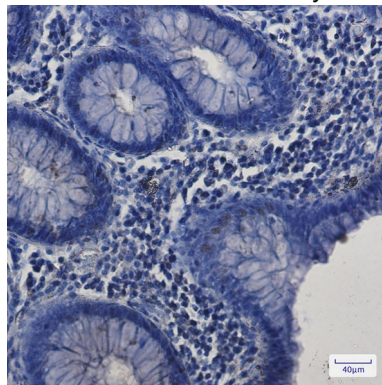
Image Data



Immunocytochemistry analysis of SP1 (green) in HeLa using SP1 antibody, and DAPI (blue).



Western blot analysis of SP1 in K562, 3T3, HeLa lysates using SP1 antibody.



Immunohistochemistry analysis of paraffin-embedded Human colon cancer tissue using SP1 antibody. High-pressure and temperature Sodium Citrate pH 6.0 was used for antigen retrieval.

Product Name: SP1 Rabbit Monoclonal Antibody
Catalog #: AMRe02628



Note

For research use only.