

**Product Name: Sonic Hedgehog Rabbit Monoclonal Antibody**  
**Catalog #: AMRe02627**

---

## Summary

<b>Production Name</b>	Sonic Hedgehog Rabbit Monoclonal Antibody
<b>Description</b>	Recombinant Rabbit Monoclonal antibody
<b>Host</b>	Rabbit
<b>Application</b>	WB,IHC-F,IHC-P,ICC/IF
<b>Reactivity</b>	Human,Mouse

## Performance

<b>Conjugation</b>	Unconjugated
<b>Modification</b>	Unmodified
<b>Isotype</b>	IgG
<b>Clonality</b>	Monoclonal Antibody
<b>Form</b>	Liquid
<b>Storage</b>	Store at 4°C short term. Aliquot and store at -20°C long term. Avoid freeze/thaw cycles.
<b>Buffer</b>	50mM Tris-Glycine(pH 7.4), 0.15M NaCl, 40% Glycerol, 0.01% Sodium azide and 0.05% BSA
<b>Purification</b>	Affinity Purified

## Immunogen

<b>Gene Name</b>	SHH
<b>Alternative Names</b>	Sonic hedgehog protein; SHH; HHG-1; Sonic hedgehog protein N-product; Sonic hedgehog protein C-product
<b>Gene ID</b>	6469
<b>SwissProt ID</b>	Q15465

## Application

<b>Dilution Ratio</b>	WB: 1/500-1/1000 IHC: 1/50-1/100 IF: 1/50-1/200
<b>Molecular Weight</b>	Calculated MW: 50 kDa; Observed MW: 50,27 kDa

**Product Name: Sonic Hedgehog Rabbit Monoclonal Antibody**  
**Catalog #: AMRe02627**



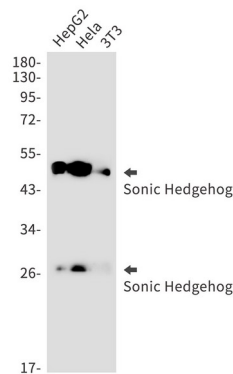
## Background

This gene encodes a protein that is instrumental in patterning the early embryo. It has been implicated as the key inductive signal in patterning of the ventral neural tube, the anterior-posterior limb axis, and the ventral somites. Of three human proteins showing sequence and functional similarity to the sonic hedgehog protein of *Drosophila*, this protein is the most similar.

## Research Area

Epigenetics and Nuclear Signaling

## Image Data



Western blot analysis of Sonic Hedgehog in HepG2, Hela, 3T3 lysates using Sonic Hedgehog antibody.

## Note

For research use only.