
Summary

Production Name	SNAP25 Rabbit Monoclonal Antibody
Description	Recombinant Rabbit Monoclonal antibody
Host	Rabbit
Application	WB
Reactivity	Human,Mouse,Rat

Performance

Conjugation	Unconjugated
Modification	Unmodified
Isotype	IgG
Clonality	Monoclonal Antibody
Form	Liquid
Storage	Store at 4°C short term. Aliquot and store at -20°C long term. Avoid freeze/thaw cycles.
Buffer	50mM Tris-Glycine(pH 7.4), 0.15M NaCl, 40% Glycerol, 0.01% Sodium azide and 0.05% BSA
Purification	Affinity Purified

Immunogen

Gene Name	SNAP25
Alternative Names	Synaptosomal-associated protein 25; SNAP-25; Super protein; SUP; Synaptosomal-associated 25 kDa protein; SNAP25; SNAP
Gene ID	6616
SwissProt ID	P60880

Application

Dilution Ratio	WB: 1/500-1/1000
Molecular Weight	Calculated MW: 23 kDa; Observed MW: 23 kDa

Product Name: SNAP25 Rabbit Monoclonal Antibody
Catalog #: AMRe02618



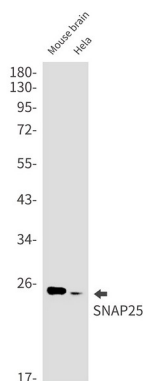
Background

SNAP25 forms a core complex with the SNARE proteins syntaxin and synaptobrevin to mediate synaptic vesicle fusion with the plasma membrane during Ca^{2+} -dependent exocytosis. This complex is responsible for exocytosis of the neurotransmitter γ -aminobutyric acid (GABA). Neurotransmitter release is inhibited by proteolysis of SNAP25 by botulinum toxins A and E. SNAP25 plays a secondary role as a Q-SNARE involved in endosome fusion; the protein is associated with genetic susceptibility to attention-deficit hyperactivity disorder (ADHD).

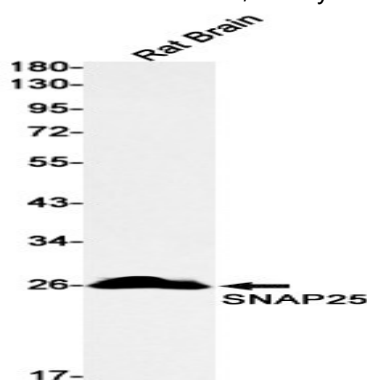
Research Area

Neuroscience

Image Data



Western blot analysis of SNAP25 in mouse brain, HeLa lysates using SNAP25 antibody.



Western blot analysis of SNAP25 in rat Brain lysates using SNAP25 antibody.

Note

For research use only.