
Summary

| | |
|------------------------|--|
| Production Name | SMARCC1 Rabbit Monoclonal Antibody |
| Description | Recombinant Rabbit Monoclonal antibody |
| Host | Rabbit |
| Application | WB,ICC/IF,IP |
| Reactivity | Human,Rat |

Performance

| | |
|---------------------|--|
| Conjugation | Unconjugated |
| Modification | Unmodified |
| Isotype | IgG |
| Clonality | Monoclonal Antibody |
| Form | Liquid |
| Storage | Store at 4°C short term. Aliquot and store at -20°C long term. Avoid freeze/thaw cycles. |
| Buffer | 50mM Tris-Glycine(pH 7.4), 0.15M NaCl, 40% Glycerol, 0.01% Sodium azide and 0.05% BSA |
| Purification | Affinity Purified |

Immunogen

| | |
|--------------------------|---|
| Gene Name | SMARCC1 |
| Alternative Names | BAF155; CRACC1; Rsc8; SMARCC1; SRG3; SWI3 |
| Gene ID | 6599 |
| SwissProt ID | Q92922 |

Application

| | |
|-------------------------|--|
| Dilution Ratio | WB: 1/500-1/1000 IF: 1/50-1/200 IP: 1/20 |
| Molecular Weight | Calculated MW: 123 kDa; Observed MW: 155 kDa |

Background

Product Name: SMARCC1 Rabbit Monoclonal Antibody
Catalog #: AMRe02615

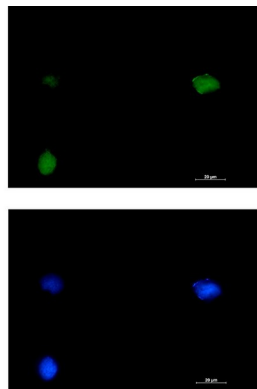


Involved in transcriptional activation and repression of select genes by chromatin remodeling (alteration of DNA-nucleosome topology). May stimulate the ATPase activity of the catalytic subunit of the complex.

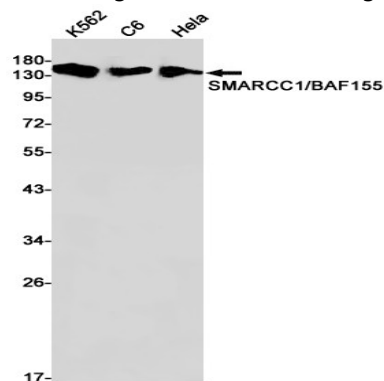
Research Area

Epigenetics and Nuclear Signaling

Image Data



Immunocytochemistry analysis of SMARCC1 (green) in HT-1080 using SMARCC1 antibody, and DAPI (blue).



Western blot analysis of SMARCC1/BAF155 in K562, C6, HeLa lysates using SMARCC1/BAF155 antibody.

Note

For research use only.