

Summary

Production Name	SMAC Rabbit Monoclonal Antibody
Description	Recombinant Rabbit Monoclonal antibody
Host	Rabbit
Application	WB,IHC-F,IHC-P,ICC/IF,IP
Reactivity	Human,Mouse,Rat

Performance

Conjugation	Unconjugated
Modification	Unmodified
Isotype	IgG
Clonality	Monoclonal Antibody
Form	Liquid
Storage	Store at 4°C short term. Aliquot and store at -20°C long term. Avoid freeze/thaw cycles.
Buffer	50mM Tris-Glycine(pH 7.4), 0.15M NaCl, 40% Glycerol, 0.01% Sodium azide and 0.05% BSA
Purification	Affinity Purified

Immunogen

Gene Name	DIABLO
Alternative Names	SMAC; DFNA64; DIABLO; SMAC3
Gene ID	56616
SwissProt ID	Q9NR28

Application

Dilution Ratio	WB: 1/500-1/1000 IHC: 1/50-1/100 IF: 1/50-1/200 IP: 1/20
Molecular Weight	Calculated MW: 27 kDa; Observed MW: 21 kDa

Background

Product Name: SMAC Rabbit Monoclonal Antibody
Catalog #: AMRe02612

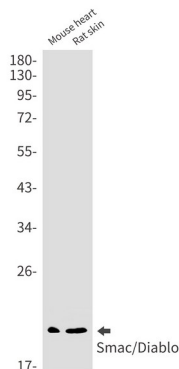


Smac/Diablo is a 21 kDa mammalian mitochondrial protein that functions as a regulatory component during apoptosis. Upon mitochondrial stress, Smac/Diablo is released from mitochondria and competes with caspases for binding of IAPs (inhibitor of apoptosis proteins). The interaction of Smac/Diablo with IAPs relieves the inhibitory effect of the IAPs on caspases.

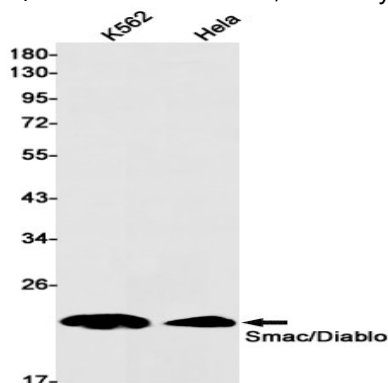
Research Area

Cell Biology

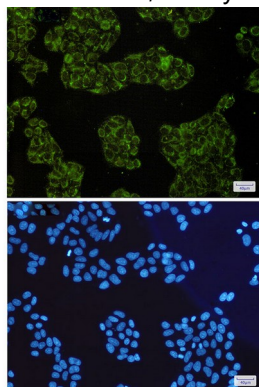
Image Data



Western blot analysis of Smac/Diablo in mouse heart, rat skin lysates using SMAC antibody.



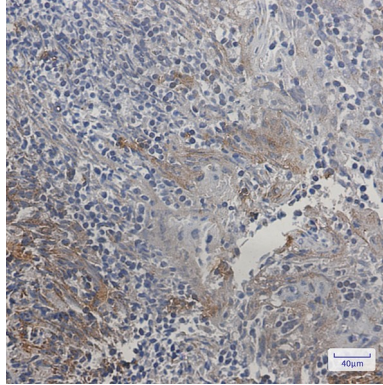
Western blot analysis of Smac/Diablo in K562, HeLa lysates using Smac/Diablo antibody.



Product Name: SMAC Rabbit Monoclonal Antibody
Catalog #: AMRe02612



Immunocytochemistry analysis of Smac/Diablo(green) in Hela using Smac/Diablo antibody, and DAPI(blue)



Immunohistochemistry analysis of paraffin-embedded Human tonsil using Smac/Diablo antibody. High-pressure and temperature Sodium Citrate pH 6.0 was used for antigen retrieval.

Note

For research use only.