
Summary

| | |
|------------------------|--|
| Production Name | SLC25A12 Rabbit Monoclonal Antibody |
| Description | Recombinant Rabbit Monoclonal antibody |
| Host | Rabbit |
| Application | WB,IP |
| Reactivity | Mouse,Rat |

Performance

| | |
|---------------------|--|
| Conjugation | Unconjugated |
| Modification | Unmodified |
| Isotype | IgG |
| Clonality | Monoclonal Antibody |
| Form | Liquid |
| Storage | Store at 4°C short term. Aliquot and store at -20°C long term. Avoid freeze/thaw cycles. |
| Buffer | 50mM Tris-Glycine(pH 7.4), 0.15M NaCl, 40% Glycerol, 0.01% Sodium azide and 0.05% BSA |
| Purification | Affinity Purified |

Immunogen

| | |
|--------------------------|----------------------|
| Gene Name | SLC25A12 |
| Alternative Names | AGC1; ARALAR; EIEE39 |
| Gene ID | 8604 |
| SwissProt ID | O75746 |

Application

| | |
|-------------------------|--|
| Dilution Ratio | WB: 1/500-1/1000 IP: 1/20 |
| Molecular Weight | Calculated MW: 75 kDa; Observed MW: 75 kDa |

Background

Product Name: SLC25A12 Rabbit Monoclonal Antibody
Catalog #: AMRe02609

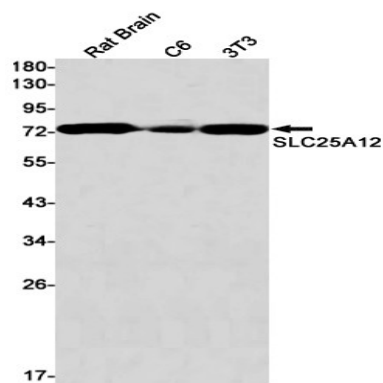


Mitochondrial and calcium-binding carrier that catalyzes the calcium-dependent exchange of cytoplasmic glutamate with mitochondrial aspartate across the mitochondrial inner membrane (PubMed:11566871, PubMed:25410934). May have a function in the urea cycle (PubMed:11566871).

Research Area

Neuroscience

Image Data



Western blot analysis of SLC25A12 in rat Brain, C6, 3T3 lysates using SLC25A12 antibody.

Note

For research use only.