

Summary

Production Name	SKP1 Rabbit Monoclonal Antibody
Description	Recombinant Rabbit Monoclonal antibody
Host	Rabbit
Application	WB,ICC/IF
Reactivity	Human,Mouse,Rat

Performance

Conjugation	Unconjugated
Modification	Unmodified
Isotype	IgG
Clonality	Monoclonal Antibody
Form	Liquid
Storage	Store at 4°C short term. Aliquot and store at -20°C long term. Avoid freeze/thaw cycles.
Buffer	50mM Tris-Glycine(pH 7.4), 0.15M NaCl, 40% Glycerol, 0.01% Sodium azide and 0.05% BSA
Purification	Affinity Purified

Immunogen

Gene Name	SKP1 SKP1; EMC19; OCP2; SKP1A; TCEB1L; S-phase kinase-associated protein 1;
Alternative Names	Cyclin-A/CDK2-associated protein p19; Organ of Corti protein 2; OCP-2; Organ of Corti protein II; OCP-II; RNA polymerase II elongation factor-like protein; SIII; Transcr
Gene ID	6500
SwissProt ID	P63208

Application

Dilution Ratio	WB: 1/500-1/1000 IF: 1/50-1/200
Molecular Weight	Calculated MW: 19 kDa; Observed MW: 19 kDa

Product Name: SKP1 Rabbit Monoclonal Antibody
Catalog #: AMRe02606



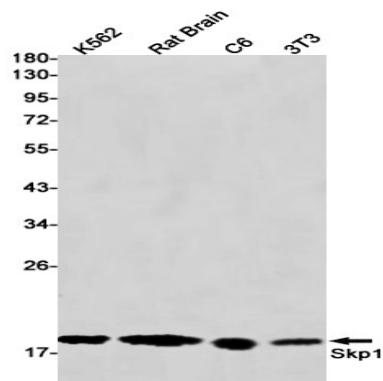
Background

Essential component of the SCF (SKP1-CUL1-F-box protein) ubiquitin ligase complex, which mediates the ubiquitination of proteins involved in cell cycle progression, signal transduction and transcription.

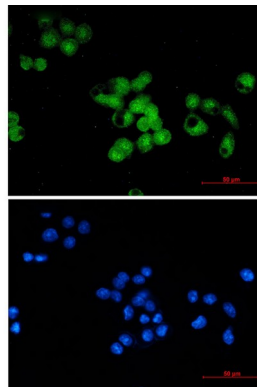
Research Area

Cell Biology

Image Data



Western blot analysis of Skp1 in K562, rat Brain, C6, 3T3 lysates using SKP1 antibody.



Immunocytochemistry analysis of Skp1 (green) in MCF-7 using Skp1 antibody, and DAPI (blue)

Note

For research use only.