

## Summary

<b>Production Name</b>	SHP1 Rabbit Monoclonal Antibody
<b>Description</b>	Recombinant Rabbit Monoclonal antibody
<b>Host</b>	Rabbit
<b>Application</b>	WB,IHC-P
<b>Reactivity</b>	Human

## Performance

<b>Conjugation</b>	Unconjugated
<b>Modification</b>	Unmodified
<b>Isotype</b>	IgG
<b>Clonality</b>	Monoclonal Antibody
<b>Form</b>	Liquid
<b>Storage</b>	Store at 4°C short term. Aliquot and store at -20°C long term. Avoid freeze/thaw cycles.
<b>Buffer</b>	50mM Tris-Glycine(pH 7.4), 0.15M NaCl, 40% Glycerol, 0.01% Sodium azide and 0.05% BSA
<b>Purification</b>	Affinity Purified

## Immunogen

<b>Gene Name</b>	PTPN6
<b>Alternative Names</b>	PTPN6; HCP; PTP1C; Tyrosine-protein phosphatase non-receptor type 6; Hematopoietic cell protein-tyrosine phosphatase; Protein-tyrosine phosphatase 1C; PTP-1C; Protein-tyrosine phosphatase SHP-1; SH-PTP1
<b>Gene ID</b>	5777
<b>SwissProt ID</b>	P29350

## Application

<b>Dilution Ratio</b>	WB: 1/500-1/1000 IHC: 1/50-1/100
<b>Molecular Weight</b>	Calculated MW: 68 kDa; Observed MW: 68 kDa

**Product Name: SHP1 Rabbit Monoclonal Antibody**  
**Catalog #: AMRe02598**



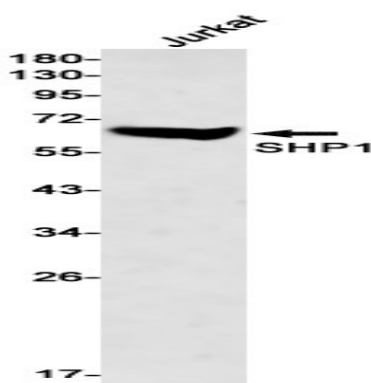
## Background

The protein encoded by this gene is a member of the protein tyrosine phosphatase (PTP) family. PTPs are known to be signaling molecules that regulate a variety of cellular processes including cell growth, differentiation, mitotic cycle, and oncogenic transformation.

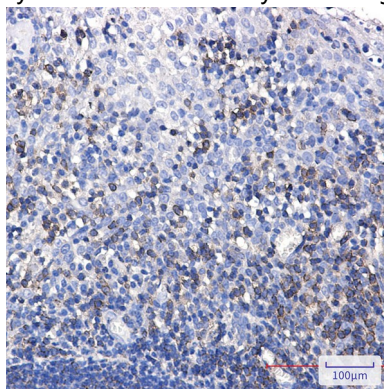
## Research Area

Cell Biology

## Image Data



Western blot analysis of SHP1 in Jurkat lysates using SHP1 antibody.



Immunohistochemistry analysis of paraffin-embedded Human tonsil using SHP1 antibody. High-pressure and temperature Sodium Citrate pH 6.0 was used for antigen retrieval.

## Note

For research use only.