
Summary

Production Name	SGSM1 Rabbit Monoclonal Antibody
Description	Recombinant Rabbit Monoclonal antibody
Host	Rabbit
Application	WB,ICC/IF
Reactivity	Human

Performance

Conjugation	Unconjugated
Modification	Unmodified
Isotype	IgG
Clonality	Monoclonal Antibody
Form	Liquid
Storage	Store at 4°C short term. Aliquot and store at -20°C long term. Avoid freeze/thaw cycles.
Buffer	50mM Tris-Glycine(pH 7.4), 0.15M NaCl, 40% Glycerol, 0.01% Sodium azide and 0.05% BSA
Purification	Affinity Purified

Immunogen

Gene Name	SGSM1
Alternative Names	RUTBC2
Gene ID	129049
SwissProt ID	Q2NKQ1

Application

Dilution Ratio	WB: 1/500-1/1000 IF: 1/50-1/200
Molecular Weight	Calculated MW: 130 kDa; Observed MW: 130 kDa

Background

Product Name: SGSM1 Rabbit Monoclonal Antibody
Catalog #: AMRe02595

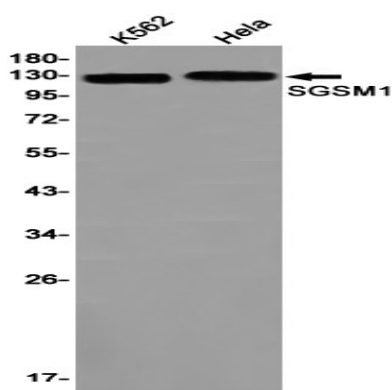


Interacts with numerous Rab family members, functioning as Rab effector for some, and as GTPase activator for others. Promotes GTP hydrolysis by RAB34 and RAB36. Probably functions as GTPase effector with RAB9A and RAB9B; does not stimulate GTP hydrolysis with RAB9A and RAB9B.

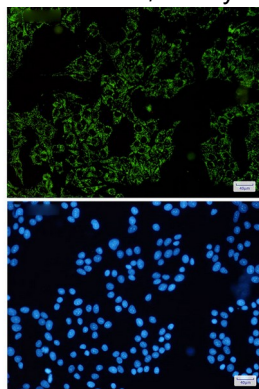
Research Area

Signal Transduction

Image Data



Western blot analysis of SGSM1 in K562, HeLa lysates using SGSM1 antibody.



Immunocytochemistry analysis of SGSM1(green) in HeLa using SGSM1 antibody, and DAPI(blue)

Note

For research use only.