

---

## Summary

<b>Production Name</b>	SF2 Rabbit Monoclonal Antibody
<b>Description</b>	Recombinant Rabbit Monoclonal antibody
<b>Host</b>	Rabbit
<b>Application</b>	WB,IHC-F,IHC-P,ICC/IF
<b>Reactivity</b>	Human,Mouse,Rat

## Performance

<b>Conjugation</b>	Unconjugated
<b>Modification</b>	Unmodified
<b>Isotype</b>	IgG
<b>Clonality</b>	Monoclonal Antibody
<b>Form</b>	Liquid
<b>Storage</b>	Store at 4°C short term. Aliquot and store at -20°C long term. Avoid freeze/thaw cycles.
<b>Buffer</b>	50mM Tris-Glycine(pH 7.4), 0.15M NaCl, 40% Glycerol, 0.01% Sodium azide and 0.05% BSA
<b>Purification</b>	Affinity Purified

## Immunogen

<b>Gene Name</b>	SRSF1
<b>Alternative Names</b>	ASF; SF2; SFRS1; SF2p33; SRp30a
<b>Gene ID</b>	6426
<b>SwissProt ID</b>	Q07955

## Application

<b>Dilution Ratio</b>	WB: 1/500-1/1000 IHC: 1/50-1/100 IF: 1/50-1/200
<b>Molecular Weight</b>	Calculated MW: 28 kDa; Observed MW: 28 kDa

## Background

---

**Product Name: SF2 Rabbit Monoclonal Antibody**  
**Catalog #: AMRe02591**

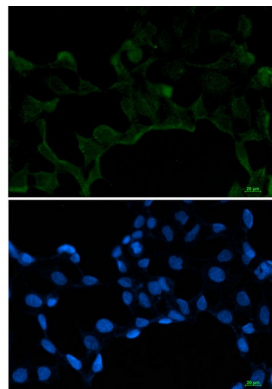


Plays a role in preventing exon skipping, ensuring the accuracy of splicing and regulating alternative splicing. Interacts with other spliceosomal components, via the RS domains, to form a bridge between the 5'- and 3'-splice site binding components, U1 snRNP and U2AF.

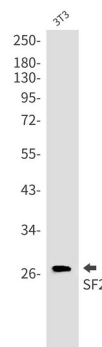
## Research Area

Epigenetics and Nuclear Signaling

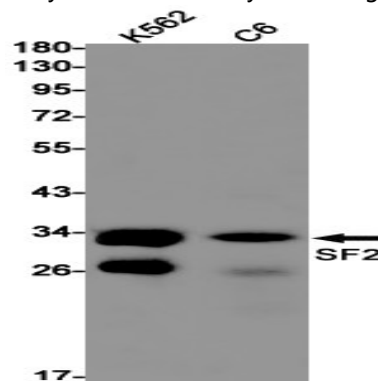
## Image Data



Immunocytochemistry analysis of SF2 (green) in 293T using SF2 antibody, and DAPI (blue).

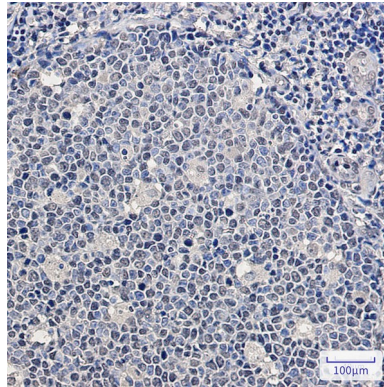


Western blot analysis of SF2 in 3T3 lysates using SF2 antibody.



Western blot analysis of SF2 in K562, C6 lysates using SF2 antibody

**Product Name: SF2 Rabbit Monoclonal Antibody**  
**Catalog #: AMRe02591**



Immunohistochemistry analysis of paraffin-embedded Human tonsil using SF2 antibody. High-pressure and temperature Sodium Citrate pH 6.0 was used for antigen retrieval.

**Note**

For research use only.