

Product Name: SERCA2 ATPase Rabbit Monoclonal Antibody
Catalog #: AMRe02588

Summary

Production Name	SERCA2 ATPase Rabbit Monoclonal Antibody
Description	Recombinant Rabbit Monoclonal antibody
Host	Rabbit
Application	WB,IHC-F,IHC-P,ICC/IF
Reactivity	Human,Rat

Performance

Conjugation	Unconjugated
Modification	Unmodified
Isotype	IgG
Clonality	Monoclonal Antibody
Form	Liquid
Storage	Store at 4°C short term. Aliquot and store at -20°C long term. Avoid freeze/thaw cycles.
Buffer	50mM Tris-Glycine(pH 7.4), 0.15M NaCl, 40% Glycerol, 0.01% Sodium azide and 0.05% BSA
Purification	Affinity Purified

Immunogen

Gene Name	ATP2A2
Alternative Names	ATP2A2; ATP2B; Sarcoplasmic/endoplasmic reticulum calcium ATPase 2; SERCA2; SR Ca(2+)-ATPase 2; Calcium pump 2; Calcium-transporting ATPase sarcoplasmic reticulum type; slow twitch skeletal muscle isoform; Endoplasmic reticulum class 1/2 Ca(2+) ATPase
Gene ID	488
SwissProt ID	P16615

Application

Dilution Ratio	WB: 1/500-1/1000 IHC: 1/50-1/100 IF: 1/50-1/200
-----------------------	---

Product Name: SERCA2 ATPase Rabbit Monoclonal Antibody
Catalog #: AMRe02588



Molecular Weight

Calculated MW: 115 kDa; Observed MW: 115 kDa

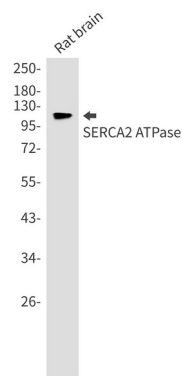
Background

This magnesium-dependent enzyme catalyzes the hydrolysis of ATP coupled with the translocation of calcium from the cytosol to the sarcoplasmic reticulum lumen. Isoform 2 is involved in the regulation of the contraction/relaxation cycle.

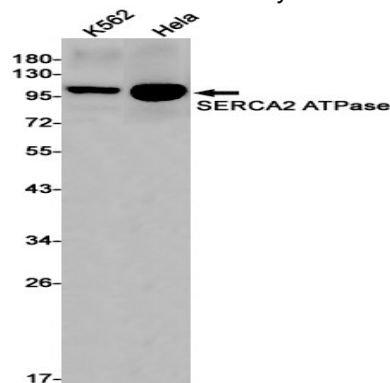
Research Area

Neuroscience

Image Data

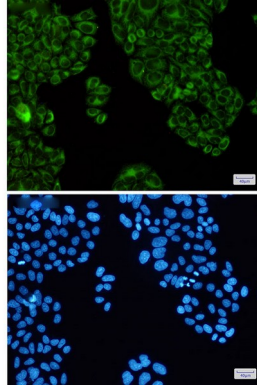


Western blot analysis of SERCA2 ATPase in rat brain lysates using SERCA2 ATPase antibody.

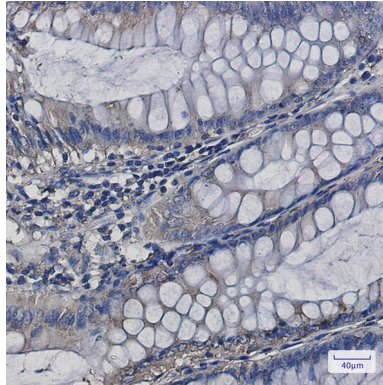


Western blot analysis of SERCA2 ATPase in K562, HeLa lysates using SERCA2 ATPase antibody.

Product Name: SERCA2 ATPase Rabbit Monoclonal Antibody
Catalog #: AMRe02588



Immunocytochemistry analysis of SERCA2 ATPase(green) in HeLa using SERCA2 ATPase antibody,and DAPI(blue)



Immunohistochemistry analysis of paraffin-embedded Human colon cancer using SERCA2 ATPase antibody.High-pressure and temperature Sodium Citrate pH 6.0 was used for antigen retrieval.

Note

For research use only.