
Summary

Production Name	SEP15 Rabbit Monoclonal Antibody
Description	Recombinant Rabbit Monoclonal antibody
Host	Rabbit
Application	WB
Reactivity	Human

Performance

Conjugation	Unconjugated
Modification	Unmodified
Isotype	IgG
Clonality	Monoclonal Antibody
Form	Liquid
Storage	Store at 4°C short term. Aliquot and store at -20°C long term. Avoid freeze/thaw cycles.
Buffer	50mM Tris-Glycine(pH 7.4), 0.15M NaCl, 40% Glycerol, 0.01% Sodium azide and 0.05% BSA
Purification	Affinity Purified

Immunogen

Gene Name	Selenof
Alternative Names	Sep15; 9430015P09Rik
Gene ID	93684.0
SwissProt ID	Q9ERR7

Application

Dilution Ratio	WB: 1/500-1/1000
Molecular Weight	Calculated MW: 18 kDa; Observed MW: 18 kDa

Background

Product Name: SEP15 Rabbit Monoclonal Antibody
Catalog #: AMRe02586

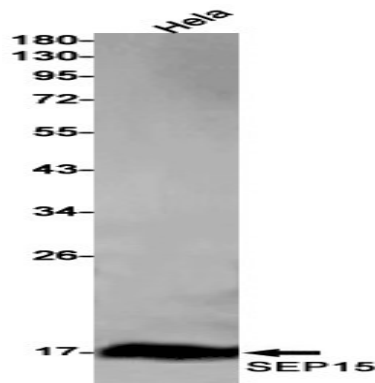


May be involved in redox reactions associated with the formation of disulfide bonds. May contribute to the quality control of protein folding in the endoplasmic reticulum .

Research Area

Cell Biology

Image Data



Western blot analysis of 44089 in HeLa lysates using SEP15 antibody.

Note

For research use only.