

Summary

Production Name	SEH1L Rabbit Monoclonal Antibody
Description	Recombinant Rabbit Monoclonal antibody
Host	Rabbit
Application	WB,IP
Reactivity	Human,Mouse,Rat

Performance

Conjugation	Unconjugated
Modification	Unmodified
Isotype	IgG
Clonality	Monoclonal Antibody
Form	Liquid
Storage	Store at 4°C short term. Aliquot and store at -20°C long term. Avoid freeze/thaw cycles.
Buffer	50mM Tris-Glycine(pH 7.4), 0.15M NaCl, 40% Glycerol, 0.01% Sodium azide and 0.05% BSA
Purification	Affinity Purified

Immunogen

Gene Name	Seh1L
Alternative Names	GATOR complex protein SEH1; Nup107-160 subcomplex subunit SEH1
Gene ID	72124.0
SwissProt ID	Q8R2U0

Application

Dilution Ratio	WB: 1/500-1/1000 IP: 1/20
Molecular Weight	Calculated MW: 40 kDa; Observed MW: 40 kDa

Background

Product Name: SEH1L Rabbit Monoclonal Antibody
Catalog #: AMRe02584

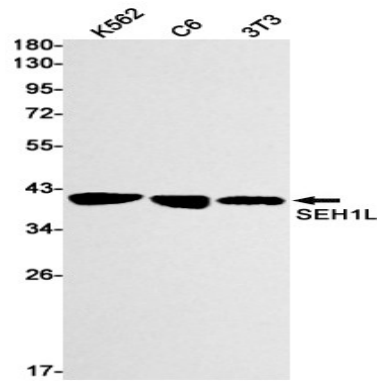


Component of the Nup107-160 subcomplex of the nuclear pore complex (NPC). The Nup107-160 subcomplex is required for the assembly of a functional NPC. The Nup107-160 subcomplex is also required for normal kinetochore microtubule attachment, mitotic progression and chromosome segregation. This subunit plays a role in recruitment of the Nup107-160 subcomplex to the kinetochore.

Research Area

Epigenetics and Nuclear Signaling

Image Data



Western blot analysis of SEH1L in K562, C6, 3T3 lysates using SEH1L antibody.

Note

For research use only.