

Summary

Production Name	SDHA Rabbit Monoclonal Antibody
Description	Recombinant Rabbit Monoclonal antibody
Host	Rabbit
Application	WB,IHC-F,IHC-P,ICC/IF,IP
Reactivity	Human,Mouse,Rat

Performance

Conjugation	Unconjugated
Modification	Unmodified
Isotype	IgG
Clonality	Monoclonal Antibody
Form	Liquid
Storage	Store at 4°C short term. Aliquot and store at -20°C long term. Avoid freeze/thaw cycles.
Buffer	50mM Tris-Glycine(pH 7.4), 0.15M NaCl, 40% Glycerol, 0.01% Sodium azide and 0.05% BSA
Purification	Affinity Purified

Immunogen

Gene Name	SDHA
Alternative Names	SDHA; SDH2; SDHF; Succinate dehydrogenase [ubiquinone] flavoprotein subunit; mitochondrial; Flavoprotein subunit of complex II; Fp
Gene ID	6389
SwissProt ID	P31040

Application

Dilution Ratio	WB: 1/500-1/1000 IHC: 1/50-1/100 IF: 1/50-1/200 IP: 1/20
Molecular Weight	Calculated MW: 73 kDa; Observed MW: 73 kDa

Product Name: SDHA Rabbit Monoclonal Antibody
Catalog #: AMRe02580



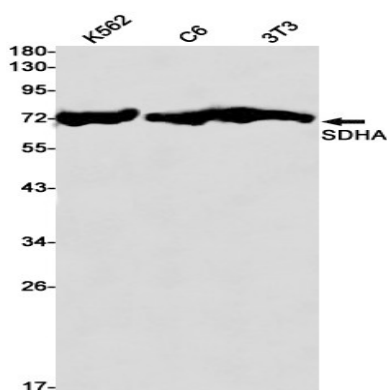
Background

Flavoprotein (FP) subunit of succinate dehydrogenase (SDH) that is involved in complex II of the mitochondrial electron transport chain and is responsible for transferring electrons from succinate to ubiquinone.

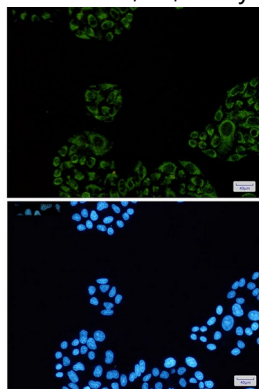
Research Area

Tags & Cell Markers

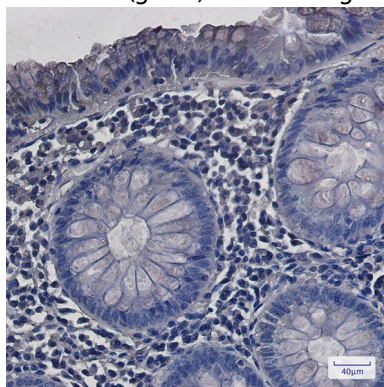
Image Data



Western blot analysis of SDHA in K562, C6, 3T3 lysates using SDHA antibody.



Immunocytochemistry analysis of SDHA(green) in HeLa using SDHA antibody, and DAPI(blue)



Immunohistochemistry analysis of paraffin-embedded Human colon cancer using SDHA antibody. High-pressure and

Product Name: SDHA Rabbit Monoclonal Antibody
Catalog #: AMRe02580



temperature Sodium Citrate pH 6.0 was used for antigen retrieval.

Note

For research use only.