

Summary

Production Name	SAFB1 Rabbit Monoclonal Antibody
Description	Recombinant Rabbit Monoclonal antibody
Host	Rabbit
Application	WB,IHC-F,IHC-P,ICC/IF
Reactivity	Human,Mouse

Performance

Conjugation	Unconjugated
Modification	Unmodified
Isotype	IgG
Clonality	Monoclonal Antibody
Form	Liquid
Storage	Store at 4°C short term. Aliquot and store at -20°C long term. Avoid freeze/thaw cycles.
Buffer	50mM Tris-Glycine(pH 7.4), 0.15M NaCl, 40% Glycerol, 0.01% Sodium azide and 0.05% BSA
Purification	Affinity Purified

Immunogen

Gene Name	SAFB
Alternative Names	SAFB; HAP; HET; SAFB1; Scaffold attachment factor B1; SAF-B; SAF-B1; HSP27 estrogen response element-TATA box-binding protein; HSP27 ERE-TATA-binding protein
Gene ID	6294
SwissProt ID	Q15424

Application

Dilution Ratio	WB: 1/500-1/1000 IHC: 1/50-1/100 IF: 1/50-1/200
Molecular Weight	Calculated MW: 103 kDa; Observed MW: 150 kDa

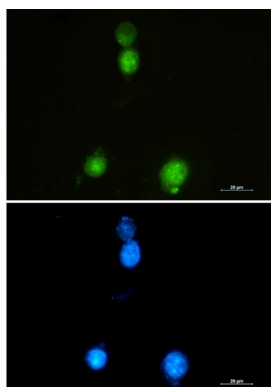
Background

This gene encodes a DNA-binding protein which has high specificity for scaffold or matrix attachment region DNA elements (S/MAR DNA). This protein is thought to be involved in attaching the base of chromatin loops to the nuclear matrix but there is conflicting evidence as to whether this protein is a component of chromatin or a nuclear matrix protein. Scaffold attachment factors are a specific subset of nuclear matrix proteins (NMP) that specifically bind to S/MAR. The encoded protein is thought to serve as a molecular base to assemble a 'transcriptosome complex' in the vicinity of actively transcribed genes. It is involved in the regulation of heat shock protein 27 transcription, can act as an estrogen receptor co-repressor and is a candidate for breast tumorigenesis. This gene is arranged head-to-head with a similar gene whose product has the same functions. Multiple transcript variants encoding different isoforms have been found for this gene.

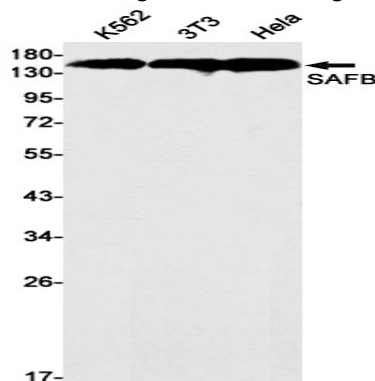
Research Area

Epigenetics and Nuclear Signaling

Image Data

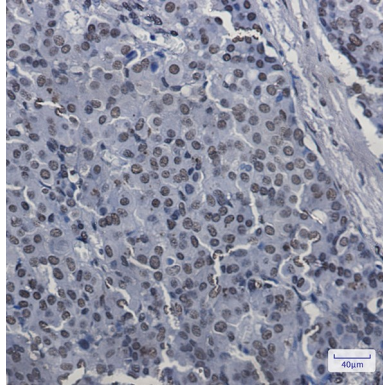


Immunocytochemistry analysis of SAFB1 (green) in 293 using SAFB1 antibody, and DAPI (blue).



Western blot analysis of SAFB in K562, 3T3, HeLa lysates using SAFB antibody.

Product Name: SAFB1 Rabbit Monoclonal Antibody
Catalog #: AMRe02569



Immunohistochemistry analysis of paraffin-embedded Human breast cancer tissue using SAFB antibody. High-pressure and temperature Sodium Citrate pH 6.0 was used for antigen retrieval.

Note

For research use only.