
Summary

Production Name	SAE1 Rabbit Monoclonal Antibody
Description	Recombinant Rabbit Monoclonal antibody
Host	Rabbit
Application	WB,ICC/IF
Reactivity	Human

Performance

Conjugation	Unconjugated
Modification	Unmodified
Isotype	IgG
Clonality	Monoclonal Antibody
Form	Liquid
Storage	Store at 4°C short term. Aliquot and store at -20°C long term. Avoid freeze/thaw cycles.
Buffer	50mM Tris-Glycine(pH 7.4), 0.15M NaCl, 40% Glycerol, 0.01% Sodium azide and 0.05% BSA
Purification	Affinity Purified

Immunogen

Gene Name	SAE1
Alternative Names	SAE1; AOS1; SUA1; UBLE1A; SUMO-activating enzyme subunit 1; Ubiquitin-like 1-activating enzyme E1A
Gene ID	10055
SwissProt ID	Q9UBE0

Application

Dilution Ratio	WB: 1/500-1/1000 IF: 1/50-1/200
Molecular Weight	Calculated MW: 38 kDa; Observed MW: 38 kDa

Product Name: SAE1 Rabbit Monoclonal Antibody
Catalog #: AMRe02568



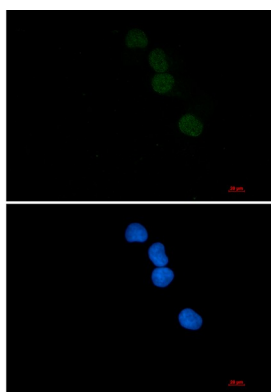
Background

The heterodimer acts as a E1 ligase for SUMO1, SUMO2, SUMO3, and probably SUMO4. It mediates ATP-dependent activation of SUMO proteins followed by formation of a thioester bond between a SUMO protein and a conserved active site cysteine residue on UBA2/SAE2.

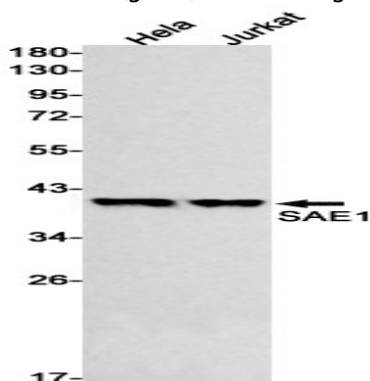
Research Area

Cell Biology

Image Data



Immunocytochemistry analysis of SAE1 (green) in HeLa using SAE1 antibody, and DAPI (blue).



Western blot analysis of SAE1 in HeLa, Jurkat lysates using SAE1 antibody.

Note

For research use only.