

Summary

Production Name	S6K1 Rabbit Monoclonal Antibody
Description	Recombinant Rabbit Monoclonal antibody
Host	Rabbit
Application	WB,ICC/IF,IP
Reactivity	Human,Mouse,Rat

Performance

Conjugation	Unconjugated
Modification	Unmodified
Isotype	IgG
Clonality	Monoclonal Antibody
Form	Liquid
Storage	Store at 4°C short term. Aliquot and store at -20°C long term. Avoid freeze/thaw cycles.
Buffer	50mM Tris-Glycine(pH 7.4), 0.15M NaCl, 40% Glycerol, 0.01% Sodium azide and 0.05% BSA
Purification	Affinity Purified

Immunogen

Gene Name	RPS6KB1 RPS6KB1; STK14A; Ribosomal protein S6 kinase beta-1; S6K-beta-1; S6K1; 70 kDa
Alternative Names	ribosomal protein S6 kinase 1; P70S6K1; p70-S6K 1; Ribosomal protein S6 kinase I; Serine/threonine-protein kinase 14A; p70 ribosomal S6 kinase alpha; p70 S6 kinas
Gene ID	6198
SwissProt ID	P23443

Application

Dilution Ratio	WB: 1/500-1/1000 IF: 1/50-1/200 IP: 1/20
Molecular Weight	Calculated MW: 59 kDa; Observed MW: 70 kDa

Product Name: S6K1 Rabbit Monoclonal Antibody
Catalog #: AMRe02566



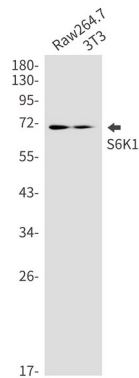
Background

This gene encodes a member of the RSK (ribosomal S6 kinase) family of serine/threonine kinases. This kinase contains 2 non-identical kinase catalytic domains and phosphorylates several residues of the S6 ribosomal protein.

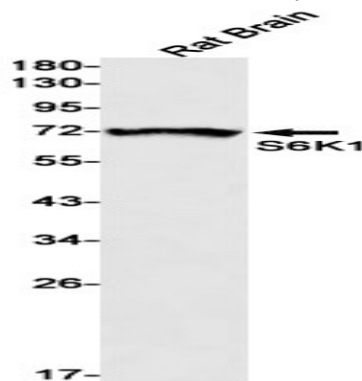
Research Area

Cell Biology

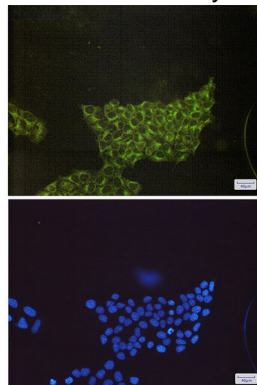
Image Data



Western blot analysis of S6K1 in Raw264.7, 3T3 lysates using S6K1 antibody.



Western blot analysis of S6K1 in rat Brain lysates using S6K1 antibody.



Product Name: S6K1 Rabbit Monoclonal Antibody
Catalog #: AMRe02566



Immunocytochemistry analysis of S6K1(green) in Hela using S6K1 antibody,and DAPI(blue)

Note

For research use only.