

---

## Summary

<b>Production Name</b>	RPS6 Rabbit Monoclonal Antibody
<b>Description</b>	Recombinant Rabbit Monoclonal antibody
<b>Host</b>	Rabbit
<b>Application</b>	WB,IHC-F,IHC-P,ICC/IF,IP
<b>Reactivity</b>	Human,Mouse,Rat

## Performance

<b>Conjugation</b>	Unconjugated
<b>Modification</b>	Unmodified
<b>Isotype</b>	IgG
<b>Clonality</b>	Monoclonal Antibody
<b>Form</b>	Liquid
<b>Storage</b>	Store at 4°C short term. Aliquot and store at -20°C long term. Avoid freeze/thaw cycles.
<b>Buffer</b>	50mM Tris-Glycine(pH 7.4), 0.15M NaCl, 40% Glycerol, 0.01% Sodium azide and 0.05% BSA
<b>Purification</b>	Affinity Purified

## Immunogen

<b>Gene Name</b>	RPS6
<b>Alternative Names</b>	RPS6; OK/SW-cl.2; 40S ribosomal protein S6; Phosphoprotein NP33
<b>Gene ID</b>	6194
<b>SwissProt ID</b>	P62753

## Application

<b>Dilution Ratio</b>	WB: 1/500-1/1000 IHC: 1/50-1/100 IF: 1/50-1/200 IP: 1/20
<b>Molecular Weight</b>	Calculated MW: 29 kDa; Observed MW: 29 kDa

## Background

---

**Product Name: RPS6 Rabbit Monoclonal Antibody**  
**Catalog #: AMRe02553**

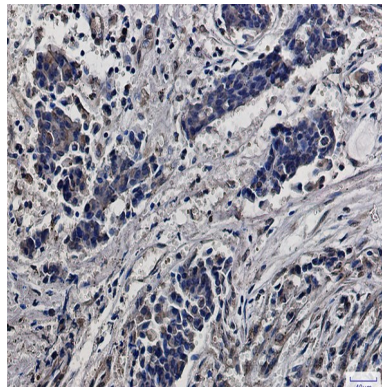


May play an important role in controlling cell growth and proliferation through the selective translation of particular classes of mRNA.

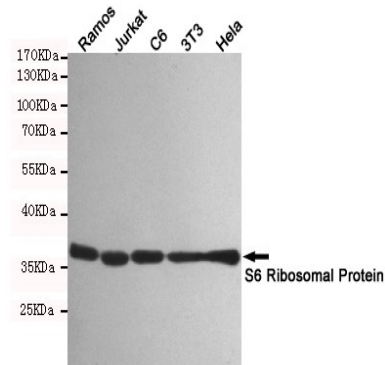
## Research Area

Epigenetics and Nuclear Signaling

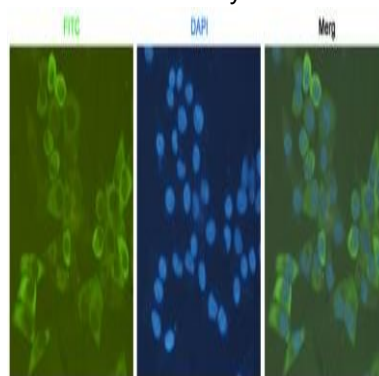
## Image Data



Immunohistochemistry analysis of paraffin-embedded Human breast cancer using RPS6 antibody. High-pressure and temperature Sodium Citrate pH 6.0 was used for antigen retrieval.



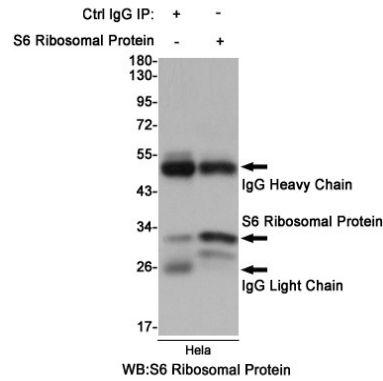
Western blot analysis of S6 Ribosomal Protein in Ramos, Jurkat, C6, 3T3 and HeLa lysates using S6 Ribosomal Protein antibody.



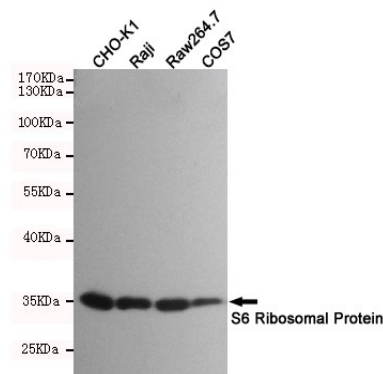
**Product Name: RPS6 Rabbit Monoclonal Antibody**  
**Catalog #: AMRe02553**



Immunocytochemistry analysis of HeLa using antiS6 Ribosomal Protein antibody.



Immunoprecipitation analysis of HeLa cell lysates using S6 Ribosomal Protein antibody.



Western blot analysis of S6 Ribosomal Protein in CHO-K1, Raji, Raw264.7 and COS7 lysates using S6 Ribosomal Protein antibody.

## Note

For research use only.