

Summary

Production Name	RPA32 Rabbit Monoclonal Antibody
Description	Recombinant Rabbit Monoclonal antibody
Host	Rabbit
Application	WB,IHC-P
Reactivity	Human,Rat

Performance

Conjugation	Unconjugated
Modification	Unmodified
Isotype	IgG
Clonality	Monoclonal Antibody
Form	Liquid
Storage	Store at 4°C short term. Aliquot and store at -20°C long term. Avoid freeze/thaw cycles.
Buffer	50mM Tris-Glycine(pH 7.4), 0.15M NaCl, 40% Glycerol, 0.01% Sodium azide and 0.05% BSA
Purification	Affinity Purified

Immunogen

Gene Name	RPA2 60S acidic ribosomal protein P1; AA409079; AI325195; AU020965; HSSB; ik:tdsubc_2g1; M(2)21C; MGC137236; OTTHUMP00000004008; p32; p34; RCJMB04_6d17 replication protein A2; 32kDa; REPA 2; REPA1; REPA2; Replication factor A protein 2; Replication protein A 32 kDa subunit; Replication protein A 32kDa subunit; Replication protein A 34 kDa subunit; Replication protein A; replication protein A1 (70kD); Replication Protein A2 (32kDa); Replication protein A2 32kD; Replication protein A2 32kDa; Replication protein A2; Replication protein A2; 32kDa; RF A; RF-A protein 2; Rf-A2; RFA; RFA2_HUMAN; RP A; RP-A p32; RP-A p34; RP21C; RPA 2; RPA 32; RPA; RPA2; RPA32; RPA34; RPA70; RpLP1; RpP2; xx:tdsubc_2g1; zgc:109822.
Alternative Names	
Gene ID	6118
SwissProt ID	P15927

Product Name: RPA32 Rabbit Monoclonal Antibody
Catalog #: AMRe02550



Application

Dilution Ratio

WB: 1/500-1/1000 IHC: 1/50-1/100

Molecular Weight

Calculated MW: 29 kDa; Observed MW: 29 kDa

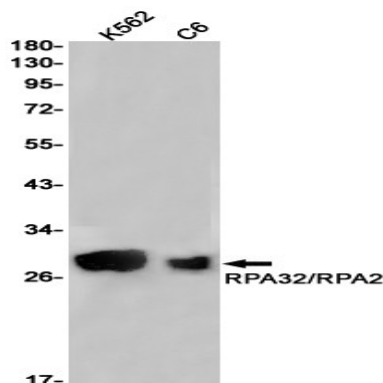
Background

As part of the heterotrimeric replication protein A complex (RPA/RP-A), binds and stabilizes single-stranded DNA intermediates, that form during DNA replication or upon DNA stress. It prevents their reannealing and in parallel, recruits and activates different proteins and complexes involved in DNA metabolism. Thereby, it plays an essential role both in DNA replication and the cellular response to DNA damage. In the cellular response to DNA damage, the RPA complex controls DNA repair and DNA damage checkpoint activation.

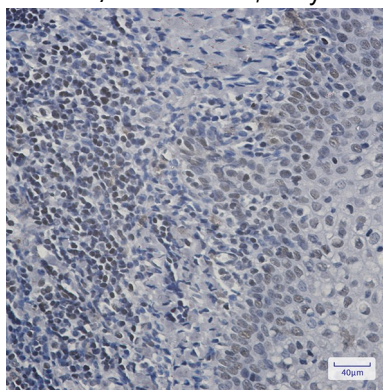
Research Area

Epigenetics and Nuclear Signaling

Image Data



Western blot analysis of RPA32/RPA2 in K562, C6 lysates using RPA32 antibody.



Immunohistochemistry analysis of paraffin-embedded Human tonsil using RPA32/RPA2 antibody. High-pressure and

Product Name: RPA32 Rabbit Monoclonal Antibody
Catalog #: AMRe02550



temperature Sodium Citrate pH 6.0 was used for antigen retrieval.

Note

For research use only.