

**Product Name: Phospho-Raf1 (Ser259) Rabbit
Monoclonal Antibody
Catalog #: AMRe02515**

Summary

Production Name	Phospho-Raf1 (Ser259) Rabbit Monoclonal Antibody
Description	Recombinant Rabbit Monoclonal antibody
Host	Rabbit
Application	WB,IHC-P
Reactivity	Human,Mouse,Rat

Performance

Conjugation	Unconjugated
Modification	Phosphorylated
Isotype	IgG
Clonality	Monoclonal Antibody
Form	Liquid
Storage	Store at 4°C short term. Aliquot and store at -20°C long term. Avoid freeze/thaw cycles.
Buffer	50mM Tris-Glycine(pH 7.4), 0.15M NaCl, 40% Glycerol, 0.01% Sodium azide and 0.05% BSA
Purification	Affinity Purified

Immunogen

Gene Name	RAF1
Alternative Names	RAF1; RAF; RAF proto-oncogene serine/threonine-protein kinase; Proto-oncogene c-RAF; cRaf; Raf-1
Gene ID	5894
SwissProt ID	P04049

Application

Dilution Ratio	WB: 1/500-1/1000 IHC: 1/50-1/100
Molecular Weight	Calculated MW: 73 kDa; Observed MW: 73 kDa

Product Name: Phospho-Raf1 (Ser259) Rabbit Monoclonal Antibody
Catalog #: AMRe02515

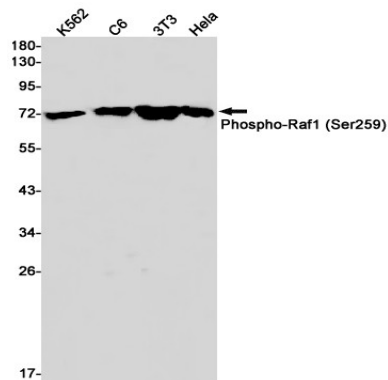
Background

Raf-1 is a MAP kinase kinase kinase (MAP3K) which functions downstream of the Ras family of membrane associated GTPases to which it binds directly. Once activated Raf-1 can phosphorylate to activate the dual specificity protein kinases MEK1 and MEK2 which in turn phosphorylate to activate the serine/threonine specific protein kinases ERK1 and ERK2.

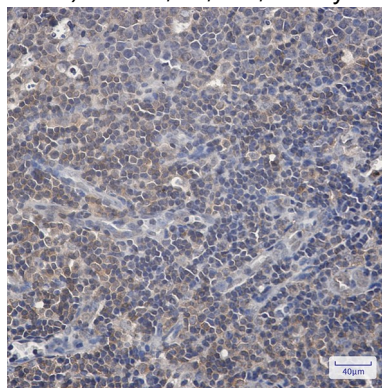
Research Area

Signal Transduction

Image Data



Western blot analysis of Phospho-Raf1 (Ser259) in K562, C6, 3T3, HeLa lysates using Phospho-Raf1 (Ser259) antibody.



Immunohistochemistry analysis of paraffin-embedded Human tonsil using Raf1 (Phospho-Ser259) antibody. High-pressure and temperature Sodium Citrate pH 6.0 was used for antigen retrieval.

Note

For research use only.