
Summary

Production Name	RACK1 Rabbit Monoclonal Antibody
Description	Recombinant Rabbit Monoclonal antibody
Host	Rabbit
Application	WB,IHC-P
Reactivity	Human,Mouse,Rat

Performance

Conjugation	Unconjugated
Modification	Unmodified
Isotype	IgG
Clonality	Monoclonal Antibody
Form	Liquid
Storage	Store at 4°C short term. Aliquot and store at -20°C long term. Avoid freeze/thaw cycles.
Buffer	50mM Tris-Glycine(pH 7.4), 0.15M NaCl, 40% Glycerol, 0.01% Sodium azide and 0.05% BSA
Purification	Affinity Purified

Immunogen

Gene Name	RACK1
Alternative Names	H12.3; HLC-7; PIG21; RACK1; Gnb2-rs1
Gene ID	10399
SwissProt ID	P63244

Application

Dilution Ratio	WB: 1/500-1/1000 IHC: 1/50-1/100
Molecular Weight	Calculated MW: 35 kDa; Observed MW: 35 kDa

Background

Product Name: RACK1 Rabbit Monoclonal Antibody
Catalog #: AMRe02512

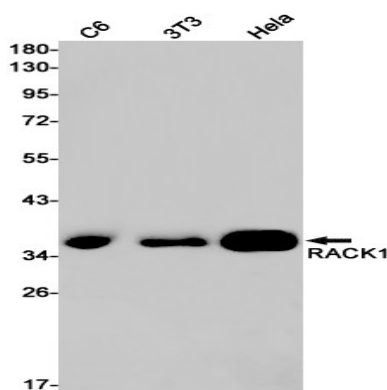


Seems to bind protein kinase C acting as an intracellular receptor to anchor the activated PKC to the cytoskeleton. May be involved in up-regulation of the activity of kinases such as PKC via binding to KRT1.

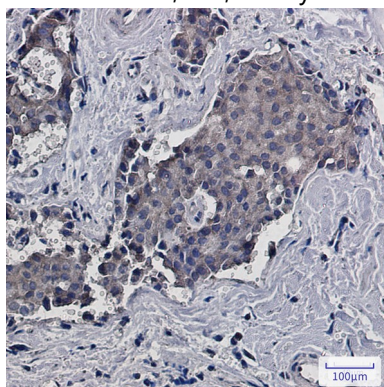
Research Area

Cell Biology

Image Data



Western blot analysis of RACK1 in C6, 3T3, HeLa lysates using RACK1 antibody.



Immunohistochemistry analysis of paraffin-embedded Human breast cancer using RACK1 antibody. High-pressure and temperature Sodium Citrate pH 6.0 was used for antigen retrieval.

Note

For research use only.