

---

## Summary

<b>Production Name</b>	Rab45 Rabbit Monoclonal Antibody
<b>Description</b>	Recombinant Rabbit Monoclonal antibody
<b>Host</b>	Rabbit
<b>Application</b>	WB,ICC/IF
<b>Reactivity</b>	Human,Mouse

## Performance

<b>Conjugation</b>	Unconjugated
<b>Modification</b>	Unmodified
<b>Isotype</b>	IgG
<b>Clonality</b>	Monoclonal Antibody
<b>Form</b>	Liquid
<b>Storage</b>	Store at 4°C short term. Aliquot and store at -20°C long term. Avoid freeze/thaw cycles.
<b>Buffer</b>	50mM Tris-Glycine(pH 7.4), 0.15M NaCl, 40% Glycerol, 0.01% Sodium azide and 0.05% BSA
<b>Purification</b>	Affinity Purified

## Immunogen

<b>Gene Name</b>	RASEF
<b>Alternative Names</b>	Ras-related protein Rab-45
<b>Gene ID</b>	158158
<b>SwissProt ID</b>	Q8IZ41

## Application

<b>Dilution Ratio</b>	WB: 1/500-1/1000 IF: 1/50-1/200
<b>Molecular Weight</b>	Calculated MW: 83 kDa; Observed MW: 83 kDa

## Background

---

**Product Name: Rab45 Rabbit Monoclonal Antibody**  
**Catalog #: AMRe02506**

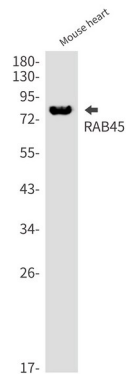


Binds predominantly GDP, and also GTP.

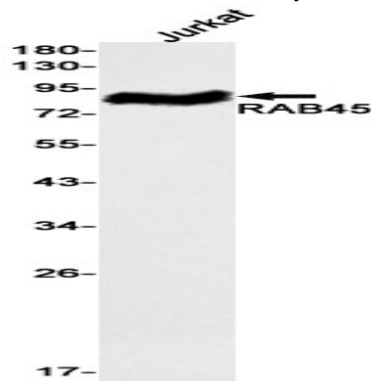
## Research Area

Signal Transduction

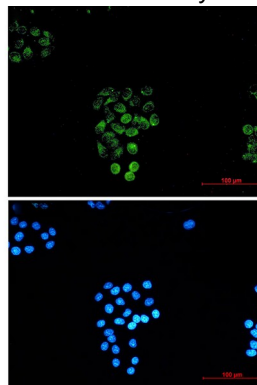
## Image Data



Western blot analysis of RAB45 in mouse heart lysates using Rab45 antibody.



Western blot analysis of RAB45 in Jurkat lysates using RAB45 antibody.



Immunocytochemistry analysis of RAB45 (green) in HeLa using RAB45 antibody, and DAPI (blue)

**Product Name: Rab45 Rabbit Monoclonal Antibody**  
**Catalog #: AMRe02506**



---

**Note**

For research use only.